

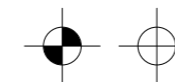
**AUFGABE:** Erstelle aus vorliegender Aufsicht und den Ansichten A-A und B-B die Schalung für die Wandscheibe mit Abschrägung.

**BESCHRIEB:**

- Sämtliche Betonflächen werden mit gehobelten Brettern und Schaltafeln geschalt.
- Schaltafeln und Kanthölzer dürfen nicht zersägt werden.
- Binde system: Dywidag, 1. Bindestelle +0.25 m ab Boden.
- Die Abschalungen werden mit vertikalen Sichtbrettern ausgeführt.

**ARBEITSABLAUF:**

- Objekt von Anrisswinkel aus aufreißen.
- Seite A aufschalen und richten.
- Beide seitlichen Abschalungen C und D vorbereiten und montieren.
- Einlage erstellen und montieren.
- Eckleisten nach Plan montieren.
- Bewehrung nach Plan verlegen und binden.
- Seite B zuschalen und fertig binden, ab +0.77 m offen lassen.

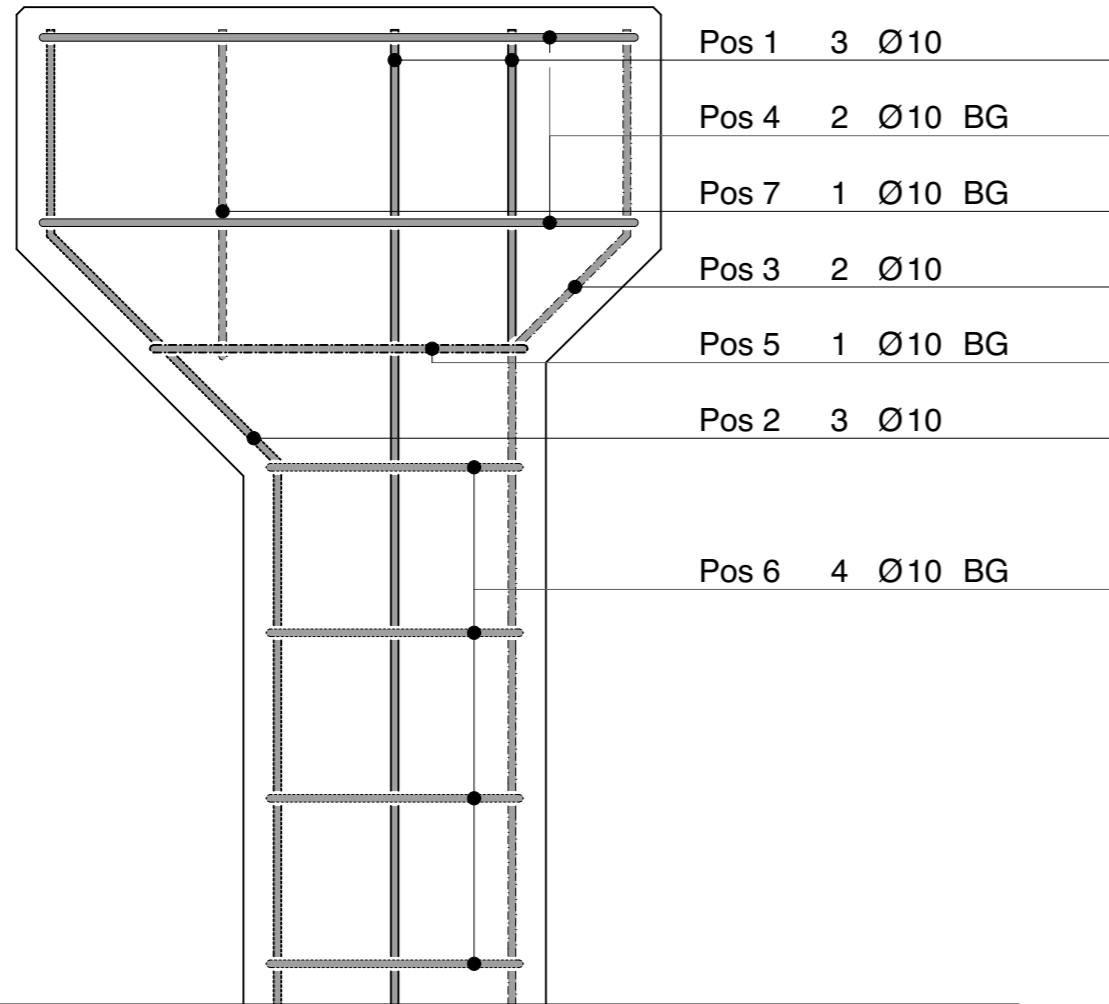


Anrisswinkel und Höhenkontrolle (ab Hallenboden ±0.00 m)

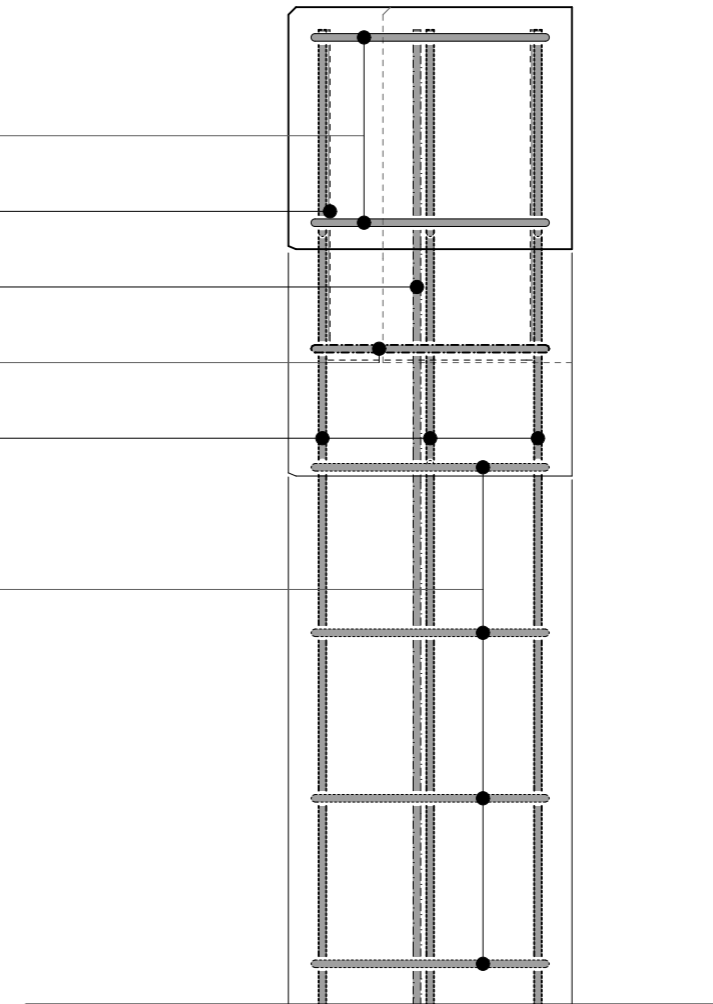
**MLS MAURER  
OBJEKT**

**QV17  
1:10**

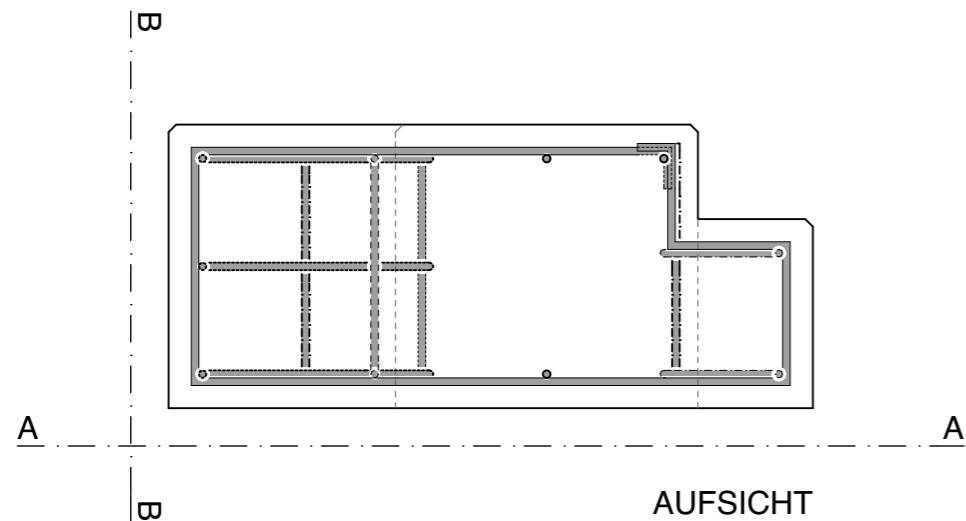
PN 1602 QV17-SO1 GR A3  
DA 30 11 2016 RV 08 02 2017  
GZ AMBERG ARCHITEKTEN, SURSEE BA



ANSICHT A-A

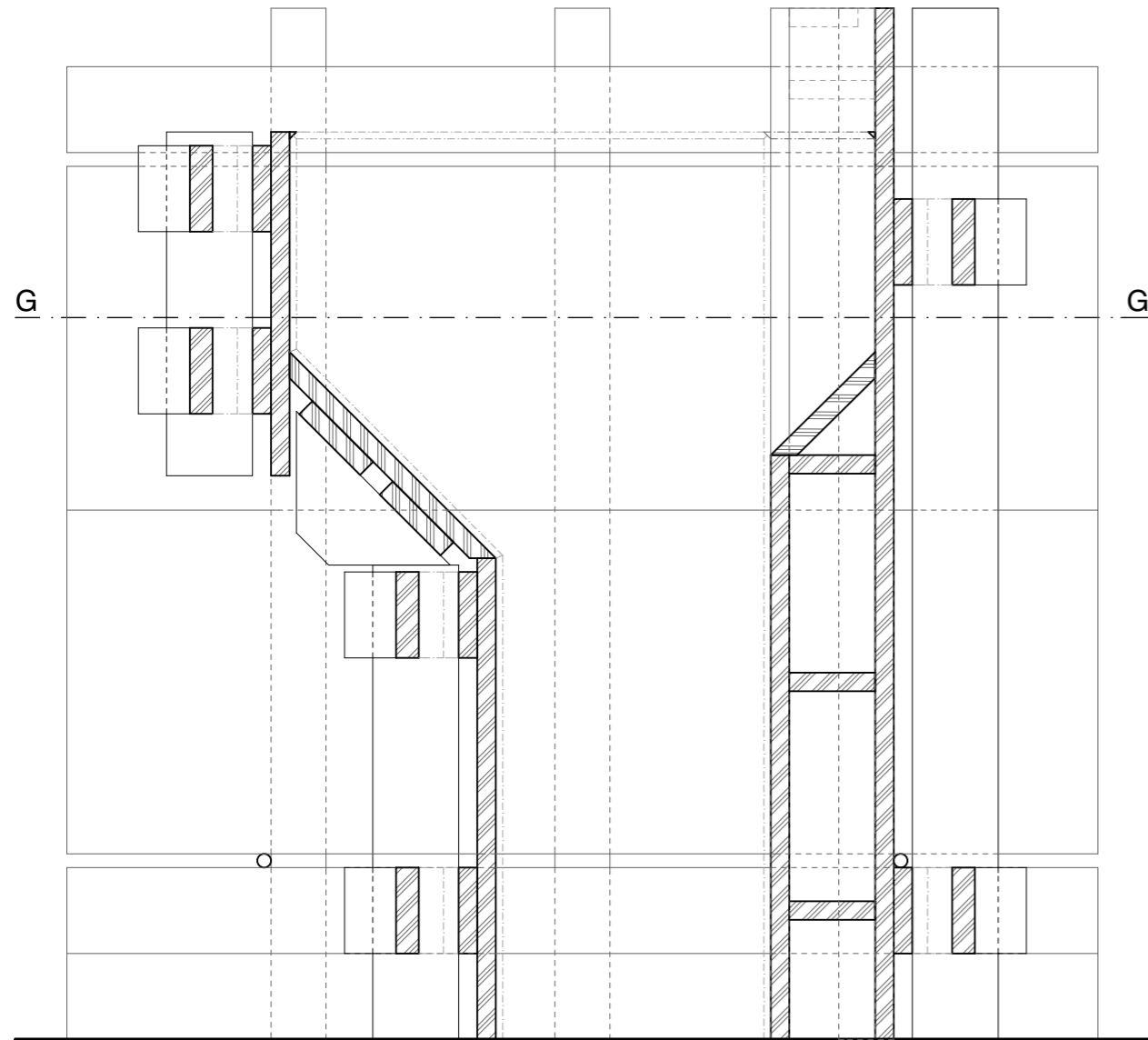


ANSICHT B-B

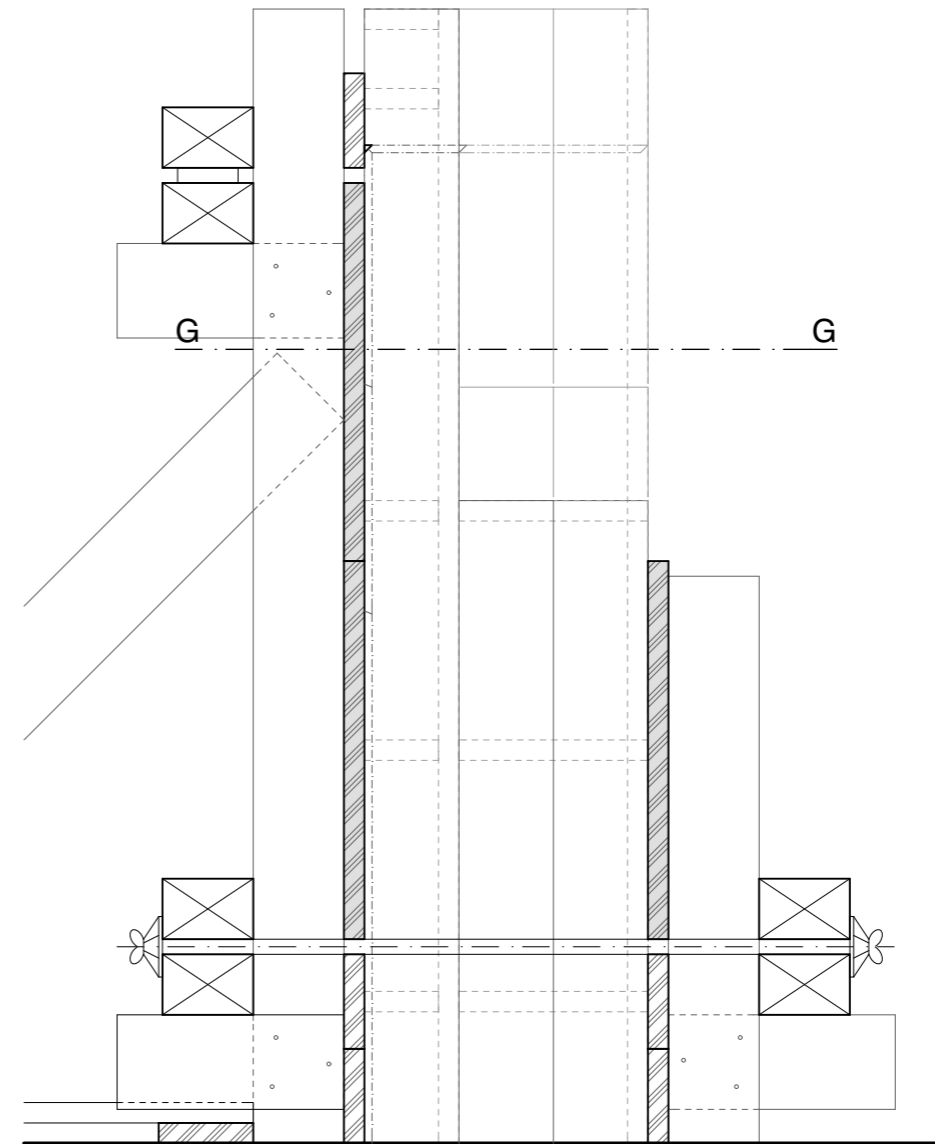


AUF SICHT

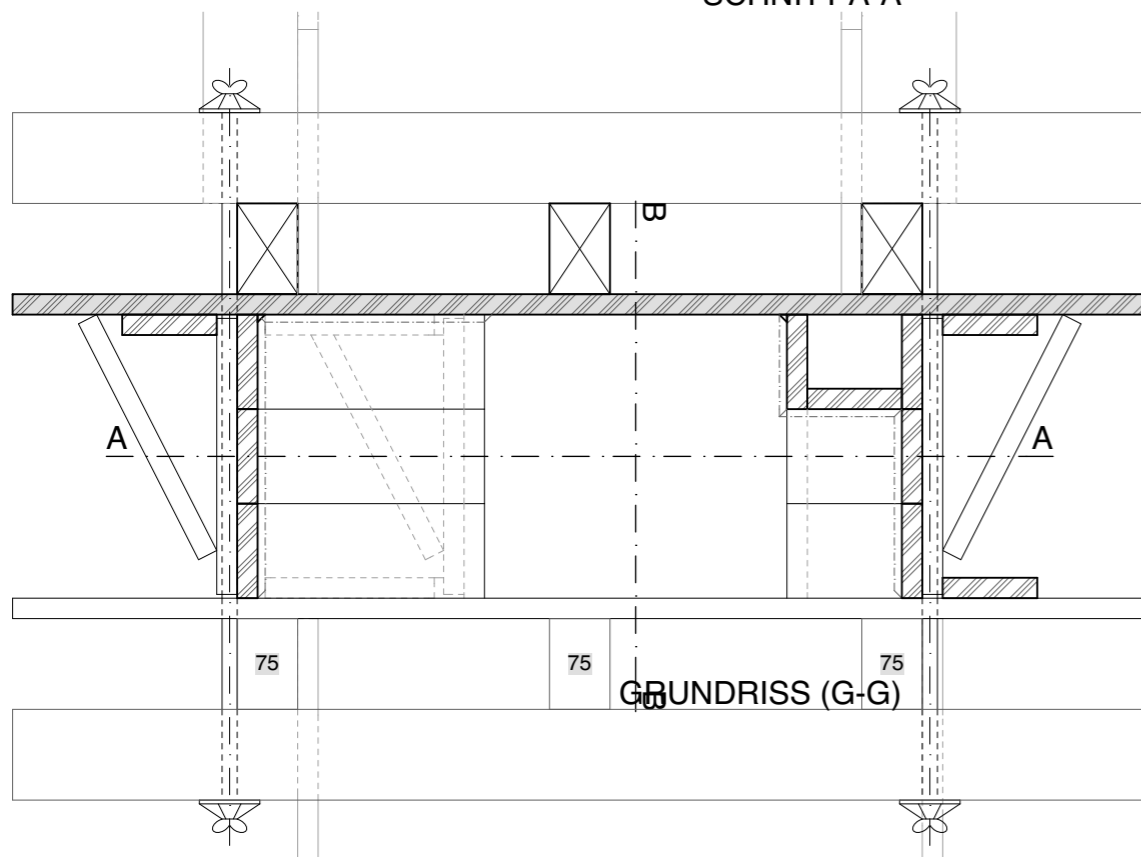
Position	Anzahl	Durchmesser	Länge		Masse		Bewehrung Wandscheibe mit Abschrägung
			Einzel	Total	Kg/m	Total	
1	3	10	1.29	3.87	0.617	2.388	
2	3	10	1.41 <sup>5</sup>	4.24 <sup>5</sup>	0.617	2.619	
3	2	10	1.35	2.70	0.617	1.666	
4	2	10	2.42	4.84	0.617	2.986	
5	1	10	1.79	1.79	0.617	1.104	
6	4	10	1.51	6.04	0.617	3.727	
7	1	10	1.15 <sup>5</sup>	1.15 <sup>5</sup>	0.617	0.713	



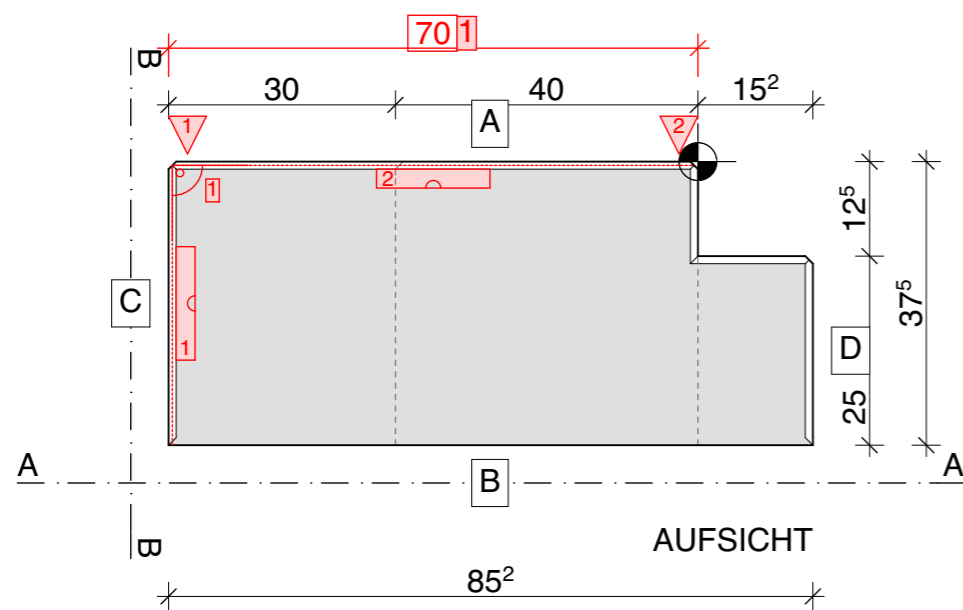
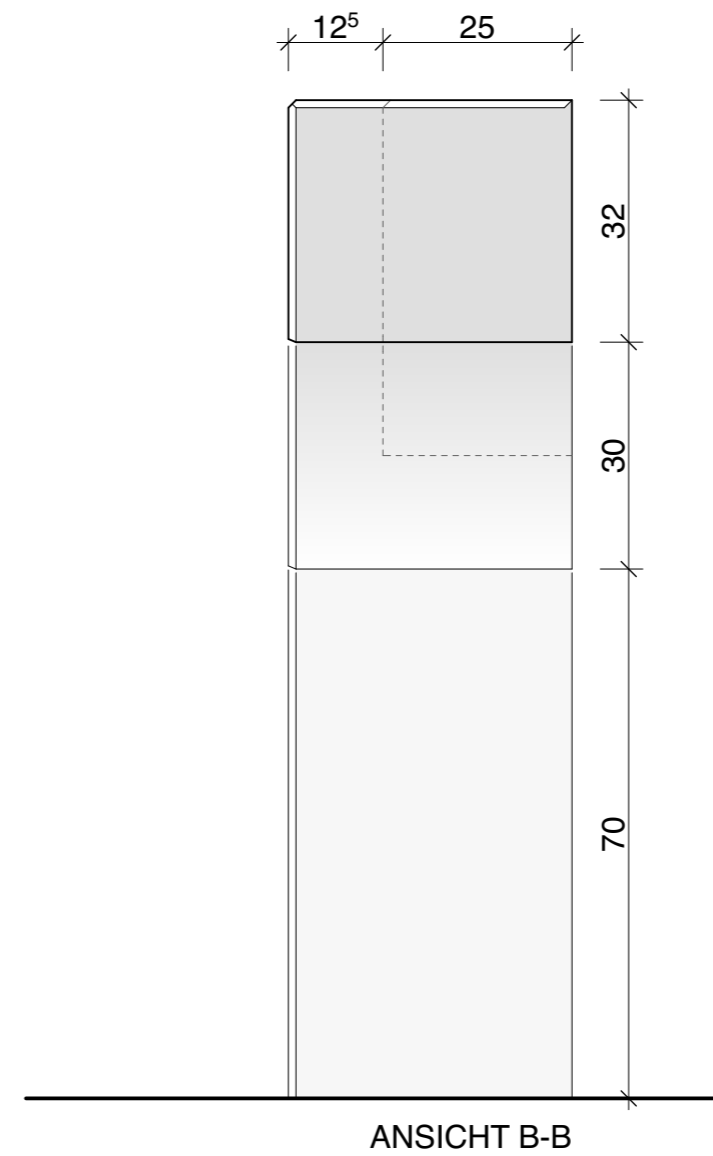
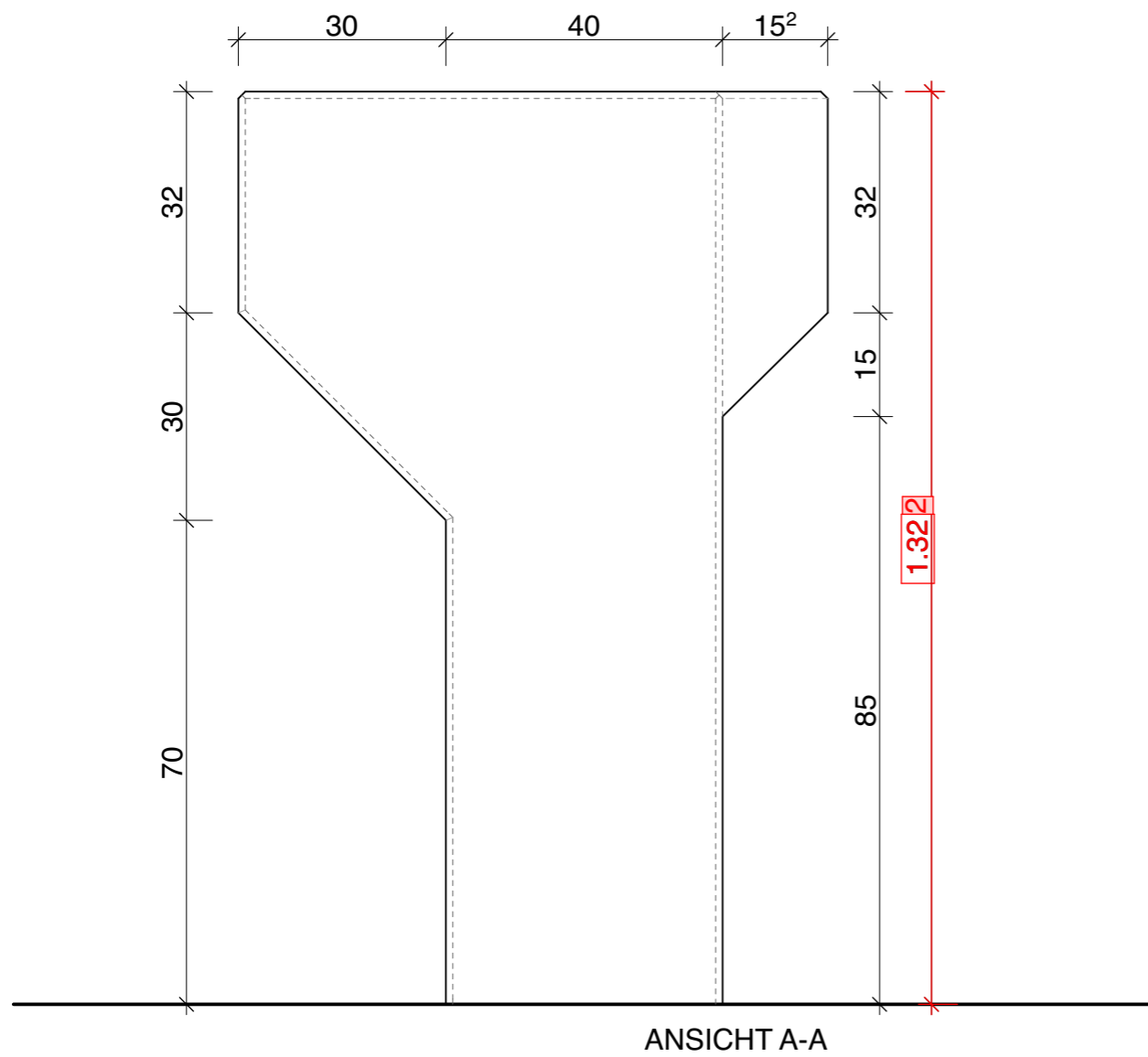
SCHNITT A-A



SCHNITT B-B



GRUNDRISS (G-G)



**NORMAL**

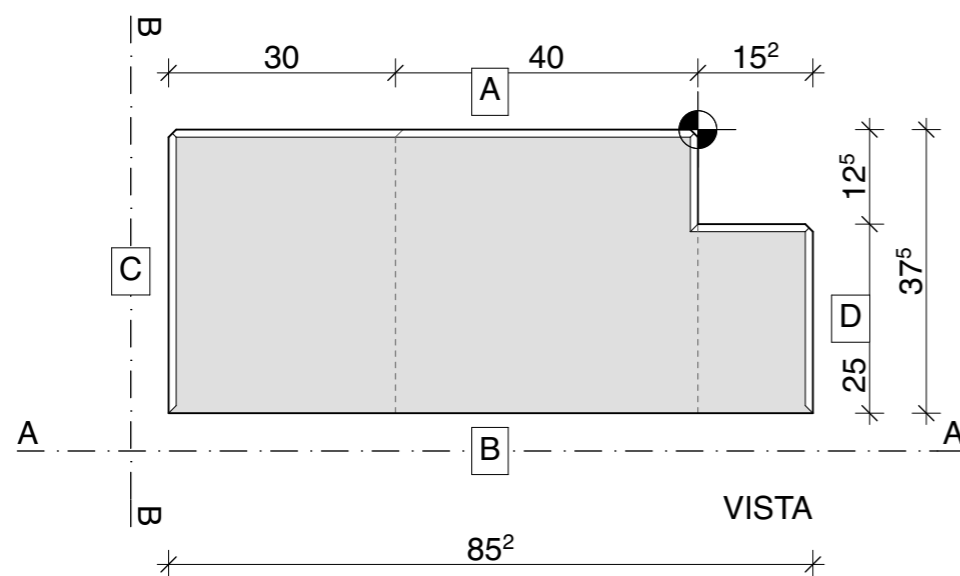
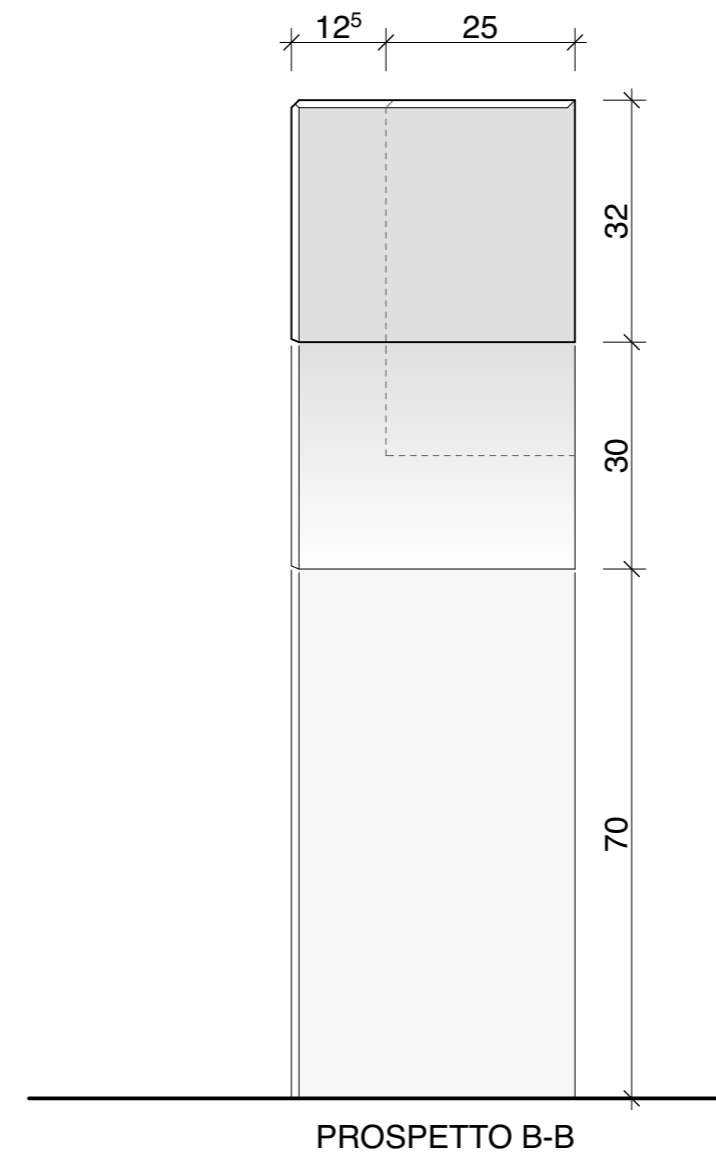
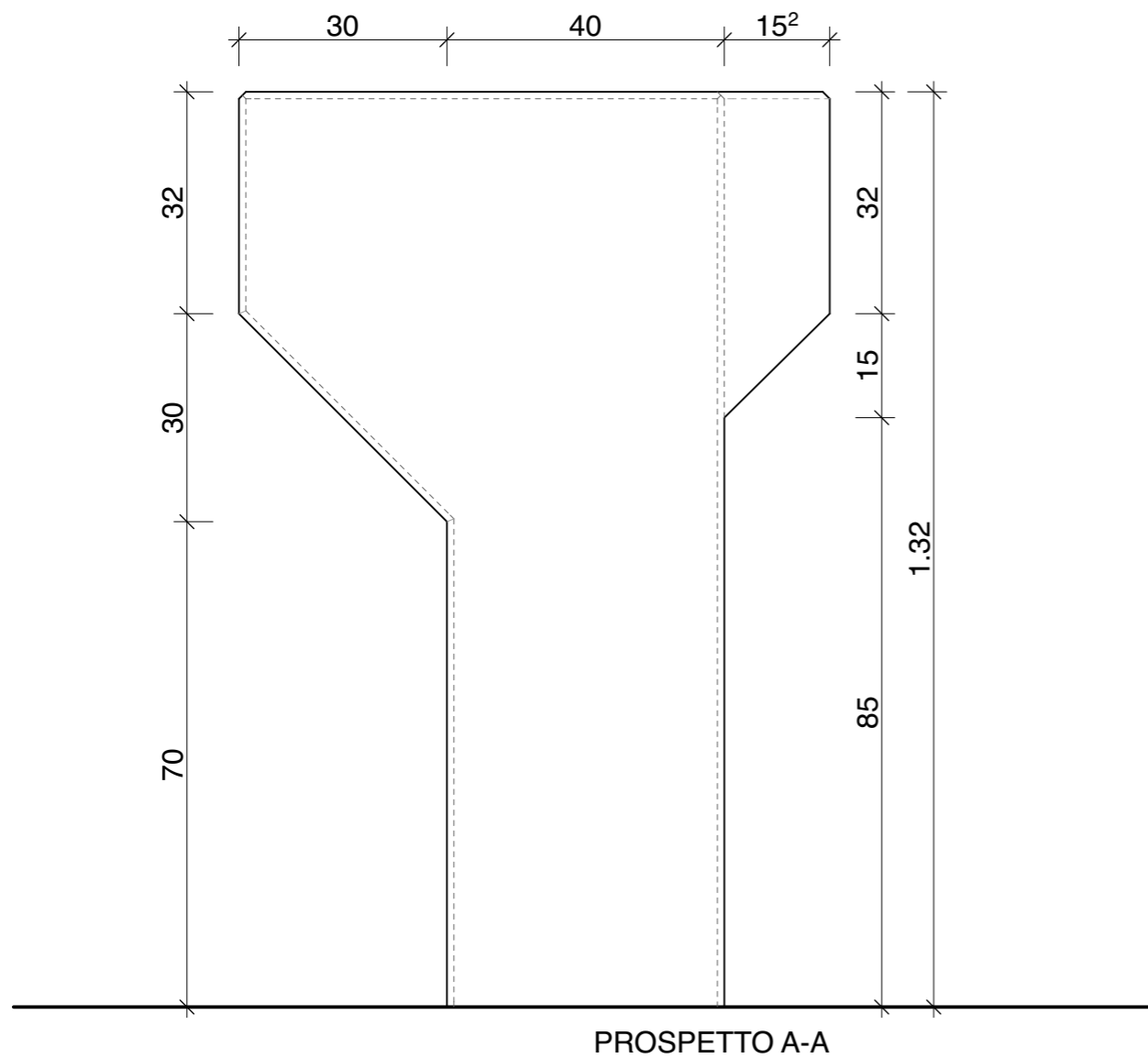
MASSE  $+1.00^{50}$  2x

SENKEL  $\nabla$  2x

WINKEL  $\angle$  1x

BLEI  $\text{---}$  2x

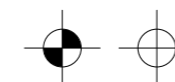
FLUCHT  $\text{---}$  0x



COMPITO: in base alla vista ed ai prospetti A-A e B-B erigi la casseratura per la parete.

DESCRIZIONE: - tutto l'elemento è da casserare con tavole piallate e pannelli d'armatura.  
- i pannelli d'armatura, i travetti e le tavole contrassegnate non possono essere tagliate.  
- sistema di legatura: Dywidag, la prima legatura è a quota +0.25 m dal pavimento.  
- tutte le sponde sono da eseguire con tavole piallate.

PROCEDIMENTO: - tracciare l'elemento a partire dal punto base.  
- erigere e mettere a piombo la parete A.  
- preparare e montare le 2 testate C e D  
- casserare il risparmio.  
- posare le liste triangolari secondo il piano.  
- posare e legare l'acciaio d'armatura secondo le indicazioni del piano.  
- casserare la parete di chiusura B, lasciare aperto a partire da +0.77 m.

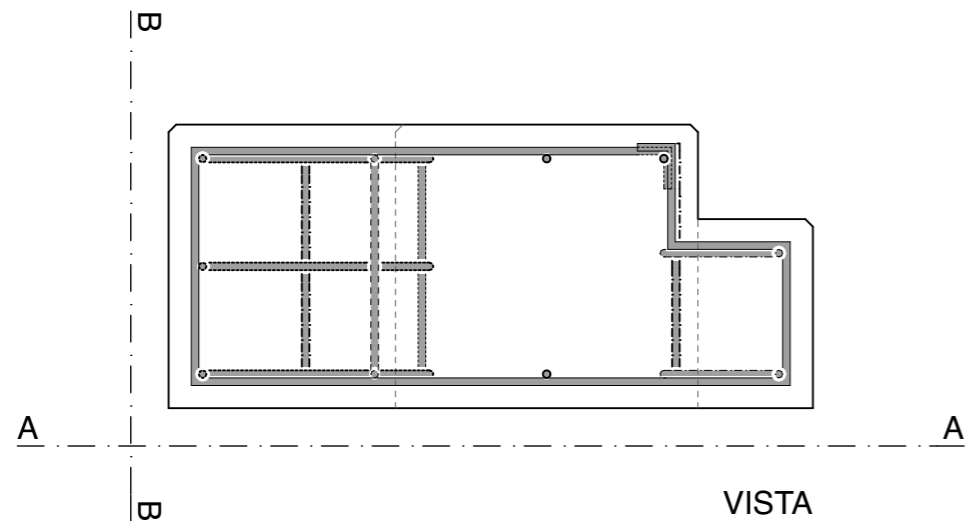
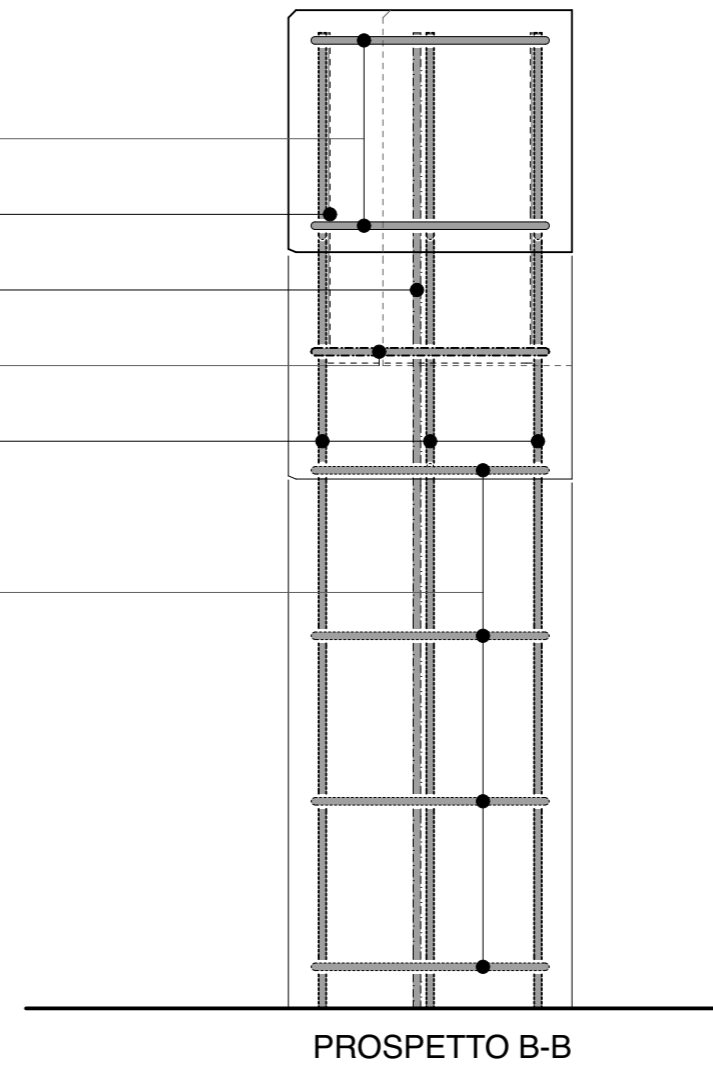
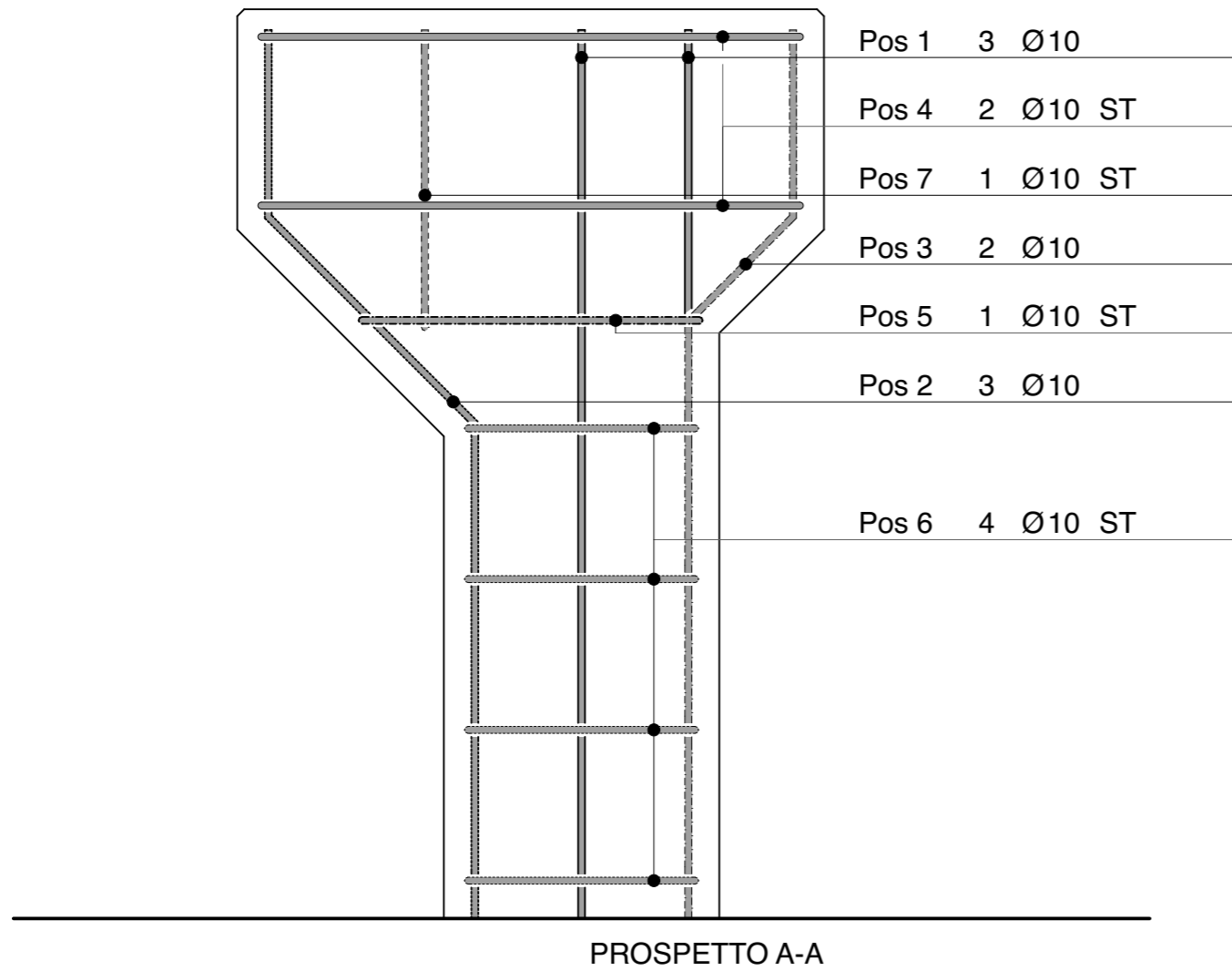


Punto base e controllo altezza  
(dal pavimento del laboratorio ±0.00 m)

MLS MAURER  
OGGETTO

PQ17  
1:10

NP 1602 PQ17-SO7 DIM A3  
DA 30 11 2016 RV 08 02 2017  
DIS AMBERG ARCHITEKTEN, SURSEE BA

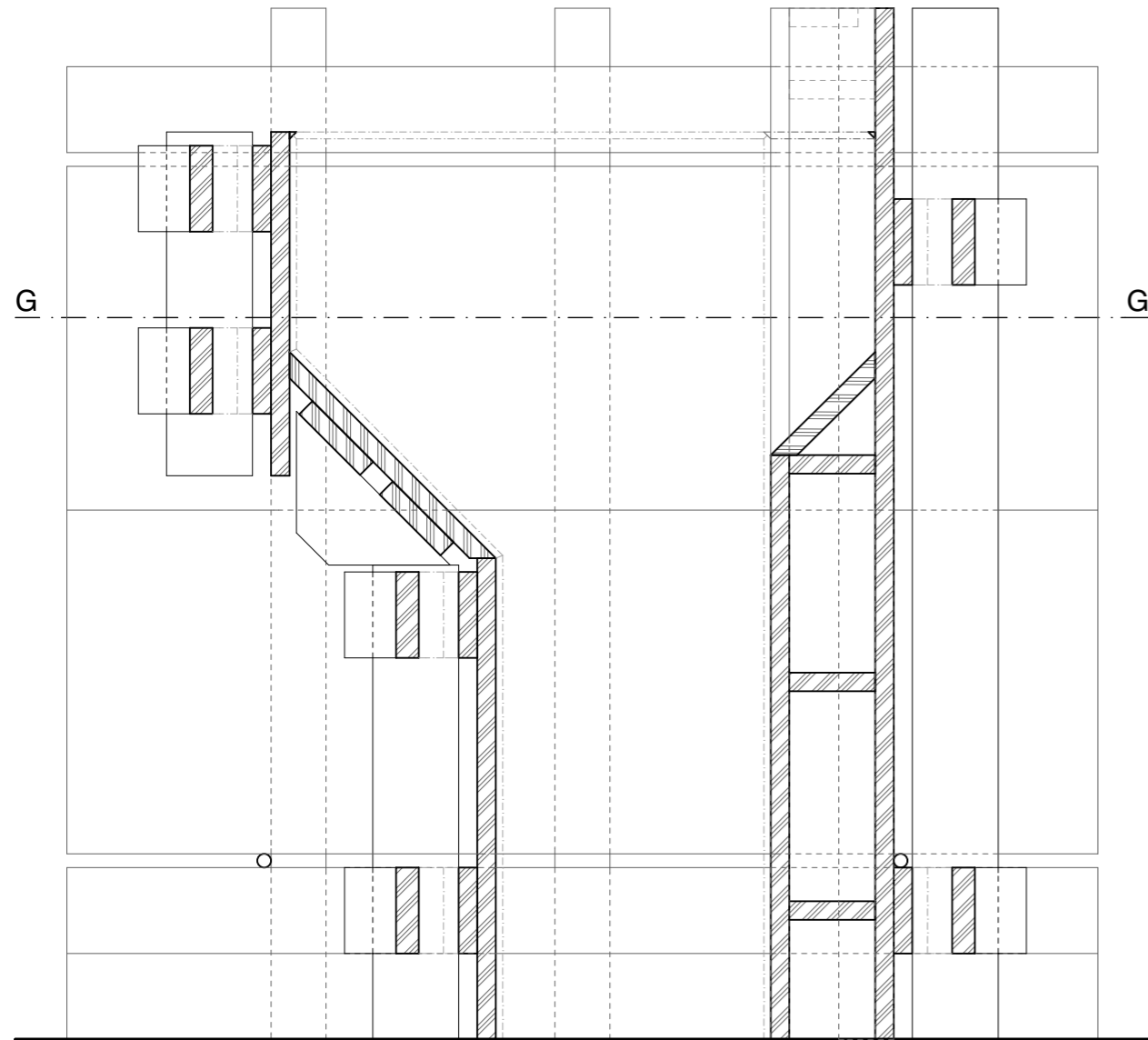


posi- zioni	pezzi	diam. Ø	lunghezza		massa		armatura forma e dimensioni
			parziale	totale	Kg/m	Totale	
1	3	10	1.29	3.87	0.617	2.388	
2	3	10	1.41 <sup>5</sup>	4.24 <sup>5</sup>	0.617	2.619	
3	2	10	1.35	2.70	0.617	1.666	
4	2	10	2.42	4.84	0.617	2.986	
5	1	10	1.79	1.79	0.617	1.104	
6	4	10	1.51	6.04	0.617	3.727	
7	1	10	1.15 <sup>5</sup>	1.15 <sup>5</sup>	0.617	0.713	

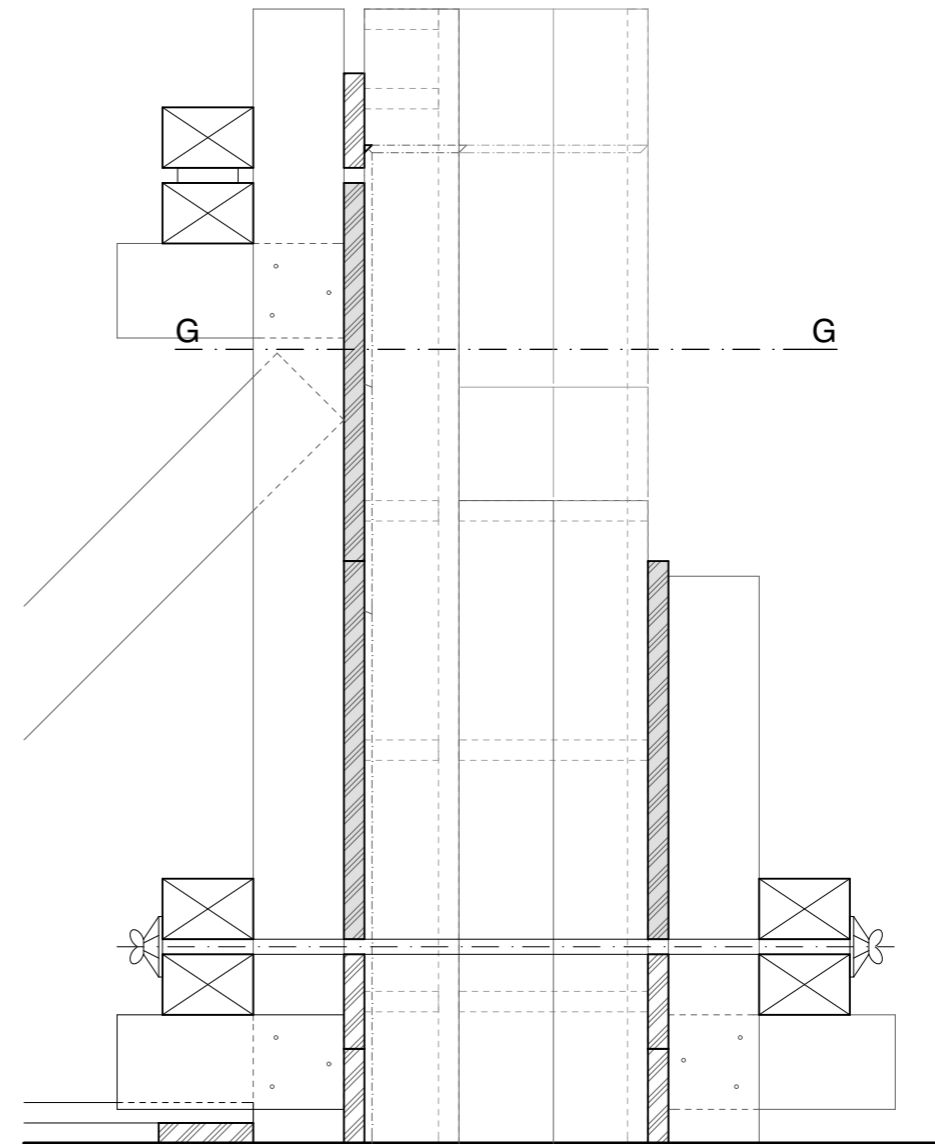
**MLS MAURER**  
**ARMATURA**

**PQ17**  
**1:10**

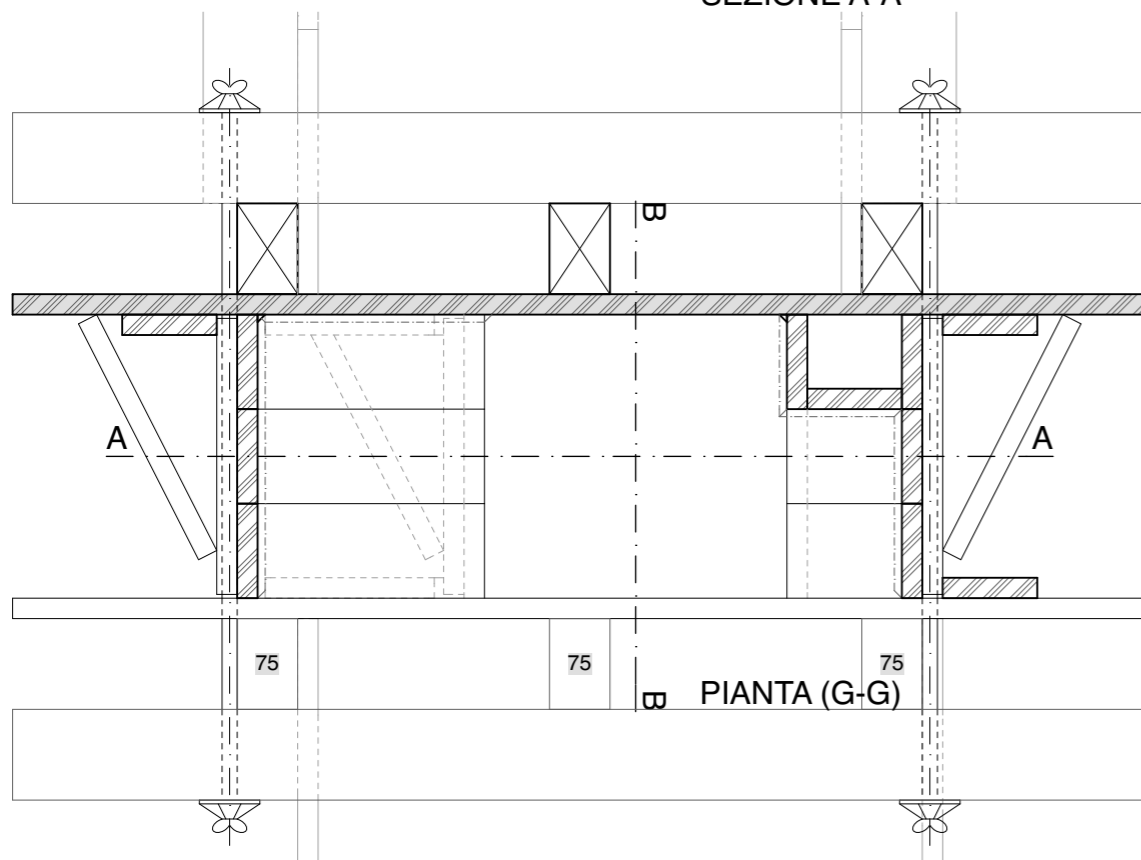
NP 1602 PQ17-SO8 DIM A3  
 DA 30 11 2016 RV 08 02 2017  
 DIS AMBERG ARCHITEKTEN, SURSEE BA



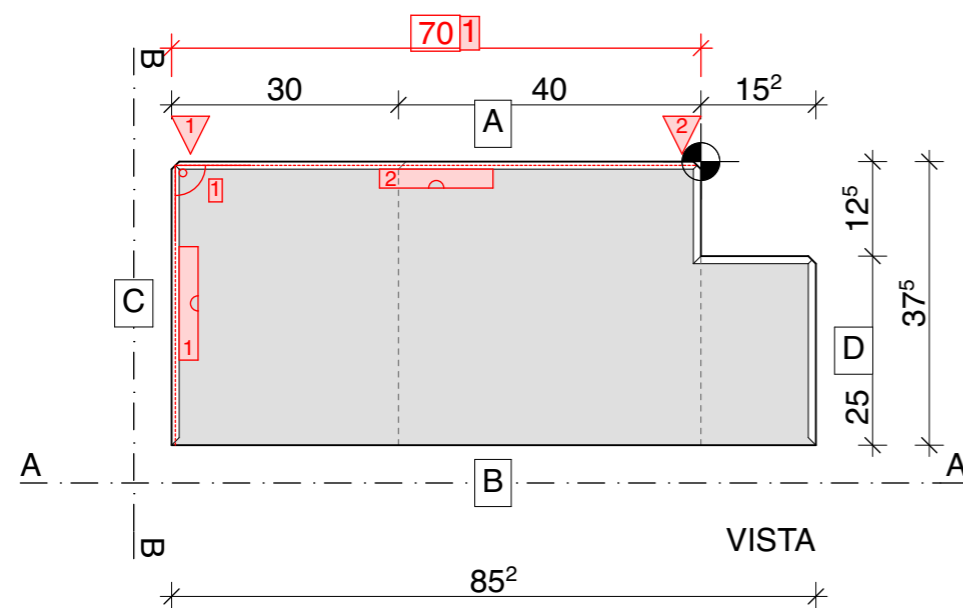
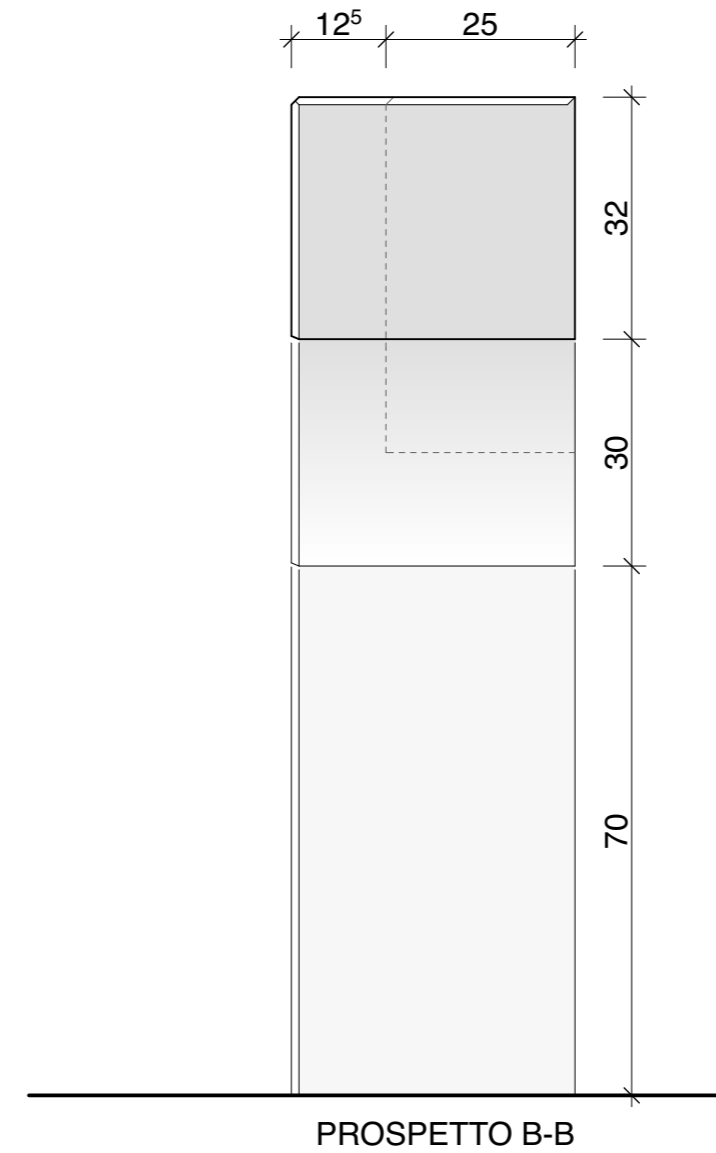
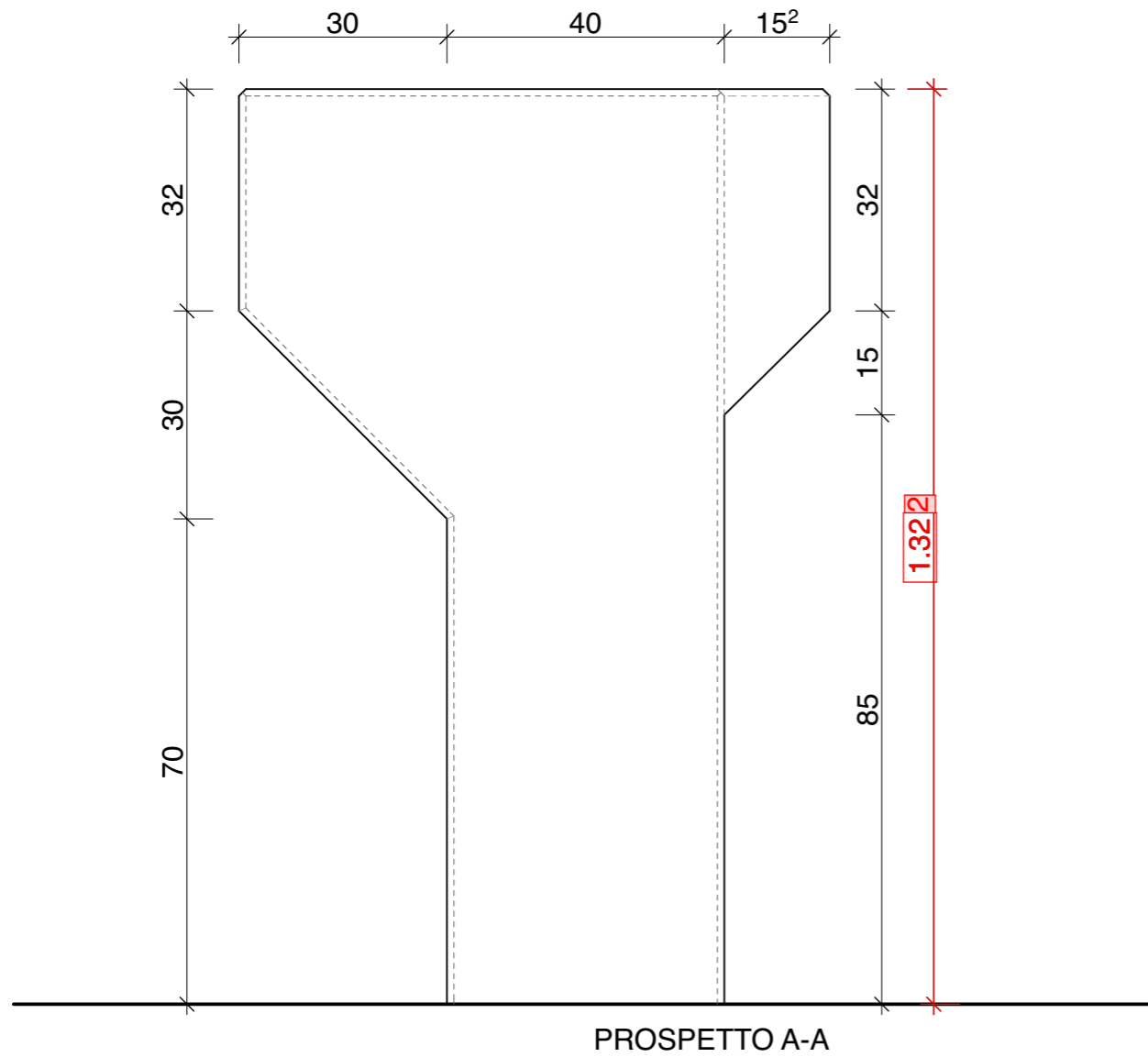
SEZIONE A-A



SEZIONE B-B



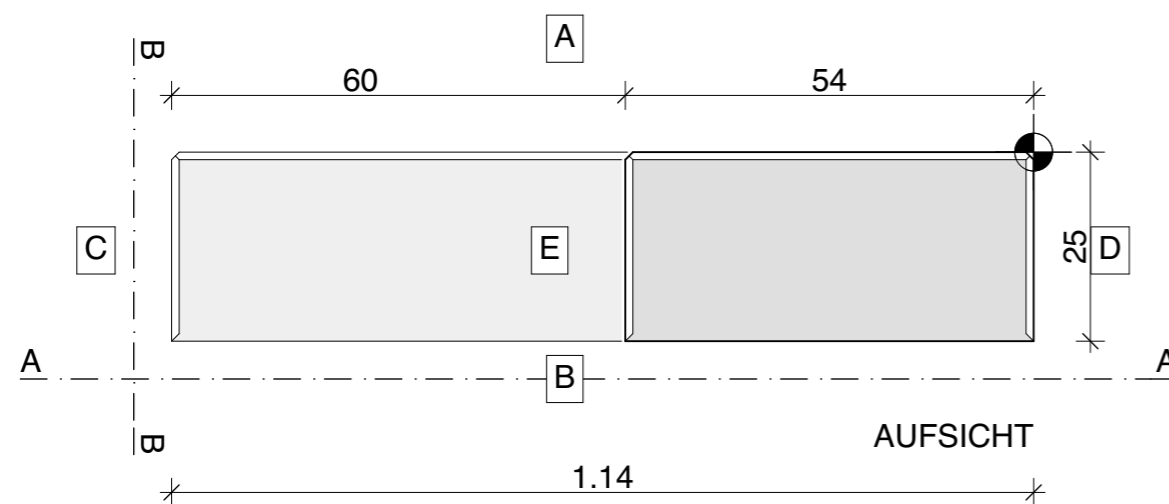
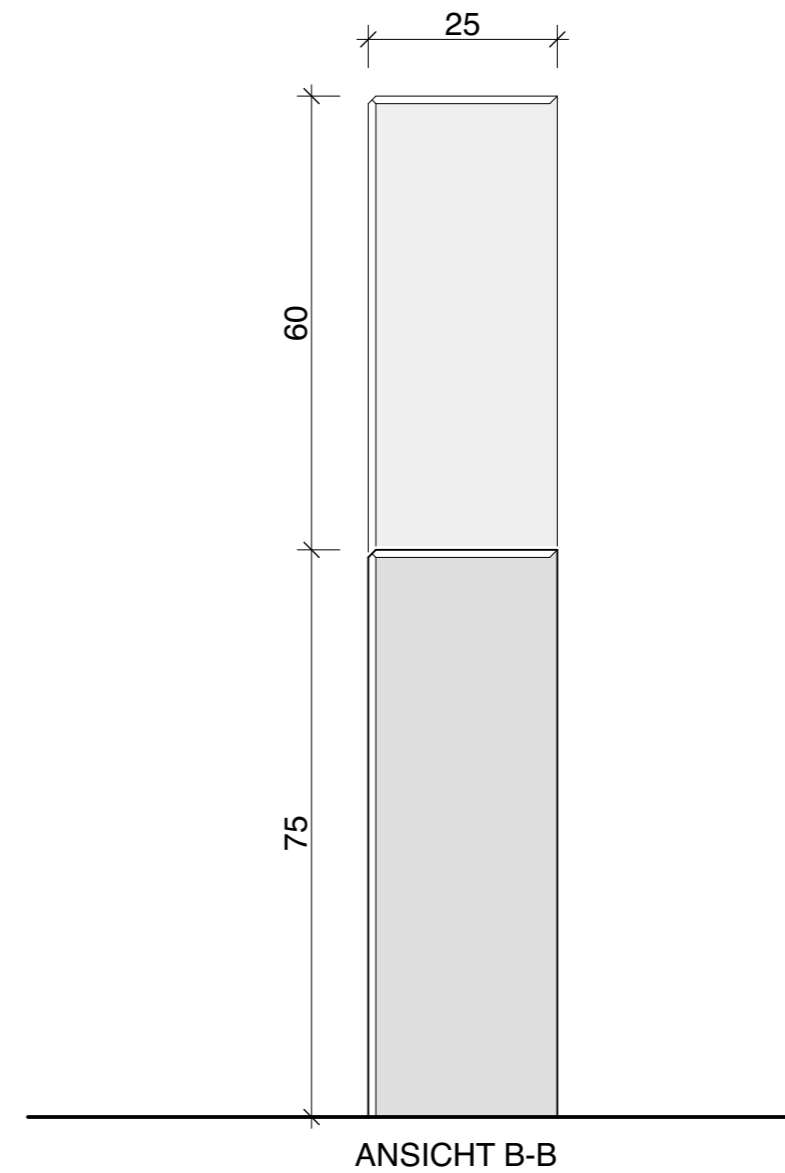
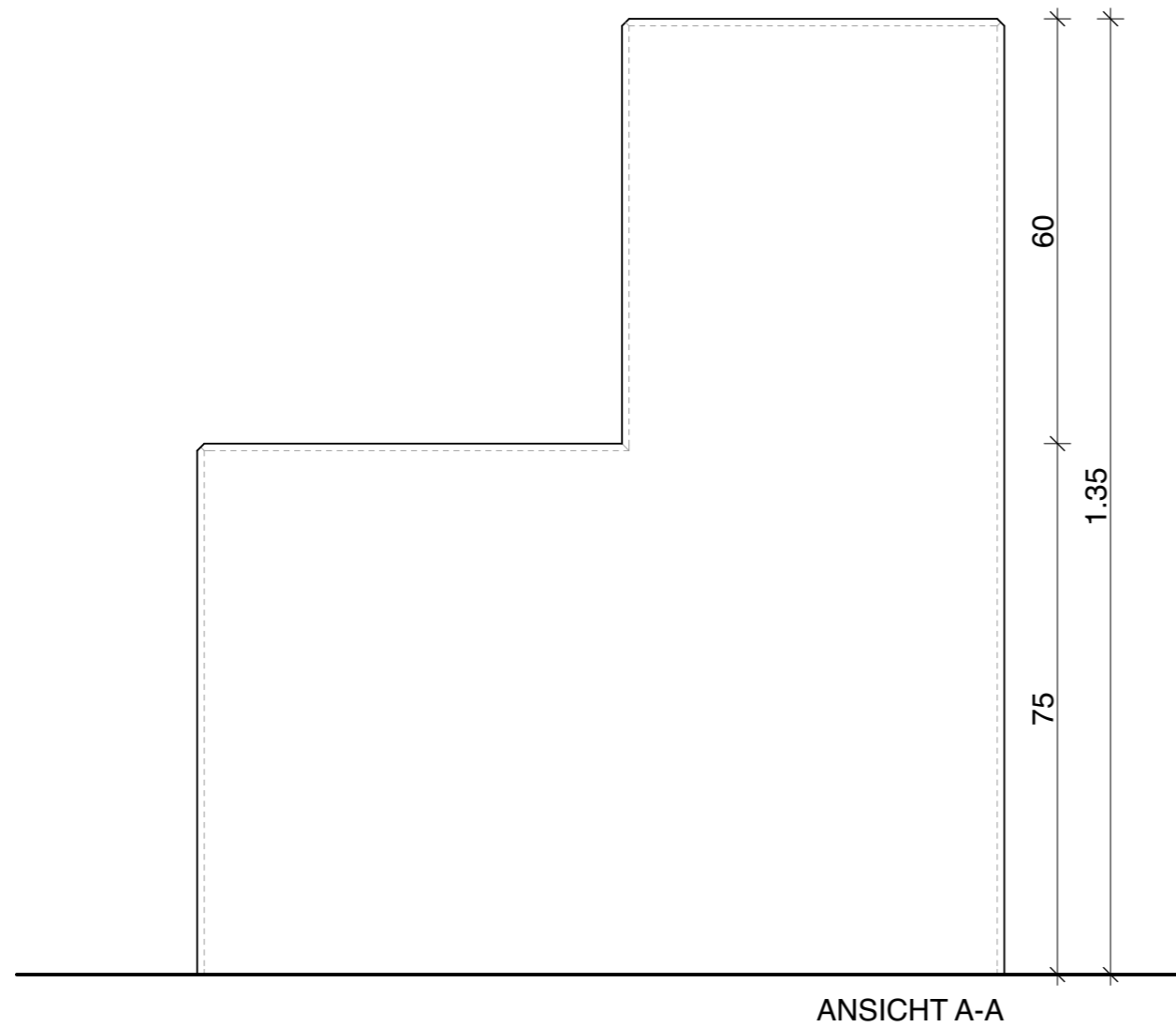
PIANTA (G-G)





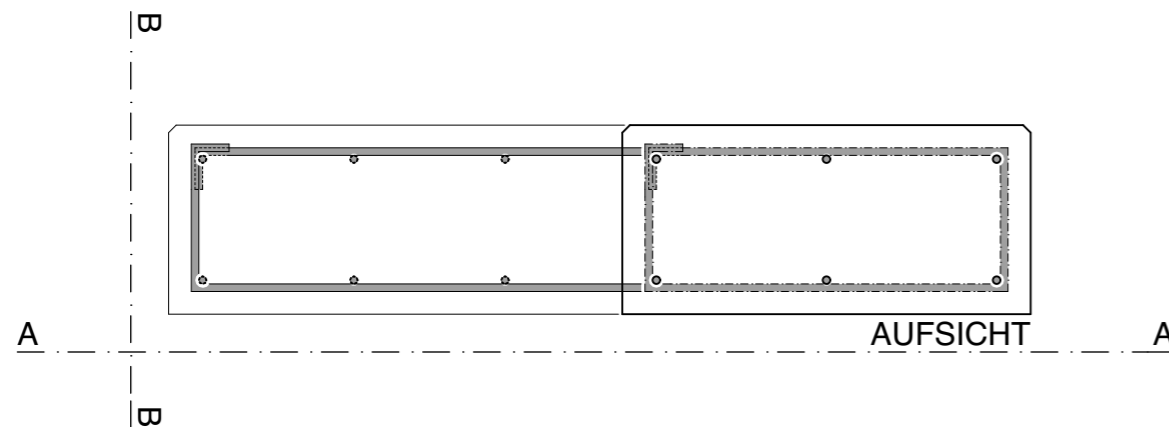
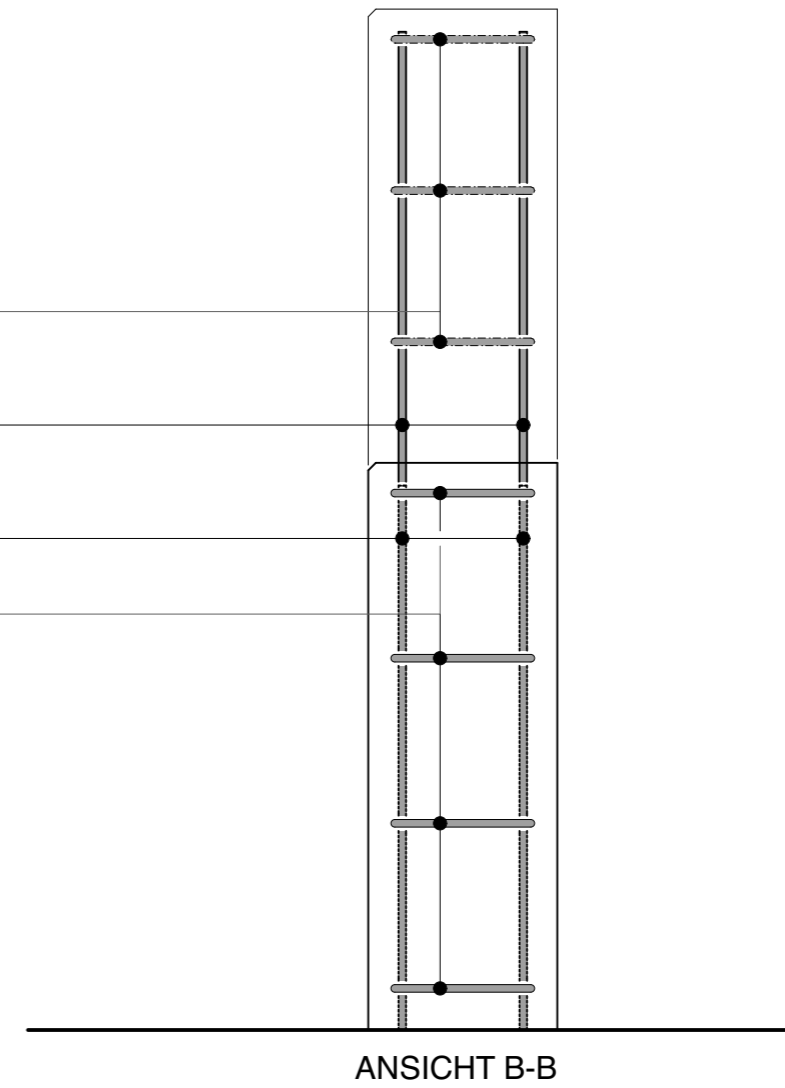
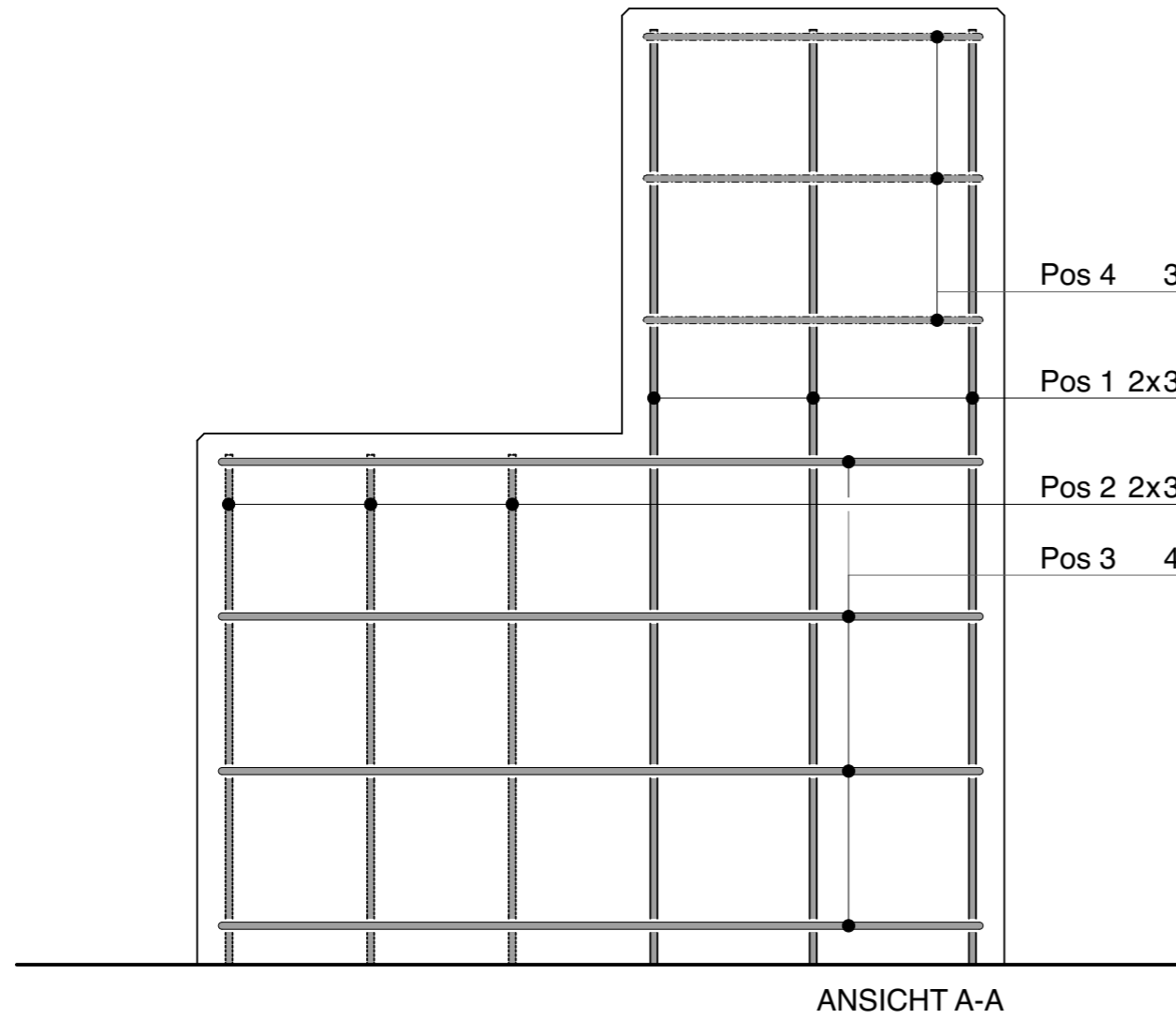
**NORMALE**

- MISURE +1.00<sup>5</sup> 2x
- PIOMBO 2x
- SQUADRA 1x
- LIVELLO 2x
- ALLINEAMENTO 0x





- AUFGABE:** Erstelle aus vorliegender Aufsicht, der Ansicht A-A und dem Schnitt B-B die Schalung für die Wandscheibe.
- BESCHRIEB:**
- Sämtliche Betonflächen werden mit gehobelten Brettern und Schaltafeln geschalt.
  - Schaltafeln und Kanthölzer dürfen nicht zersägt werden.
  - Bindsystem: Dywidag, 1. Bindestelle +0.25 m ab Boden.
  - Die Abschalungen werden mit vertikalen Sichtbrettern ausgeführt.
- ARBEITSABLAUF:**
- Objekt von Anrisswinkel aus aufreißen.
  - Seite A aufschalen und richten.
  - Sämtliche seitlichen Abschalungen C, D und E vorbereiten und montieren.
  - Eckleisten nach Plan montieren.
  - Bewehrung nach Plan verlegen und binden.
  - Seite B zuschalen und fertig binden, ab +0.77 m offen lassen.
-   Anrisswinkel und Höhenkontrolle (ab Hallenboden ±0.00 m)

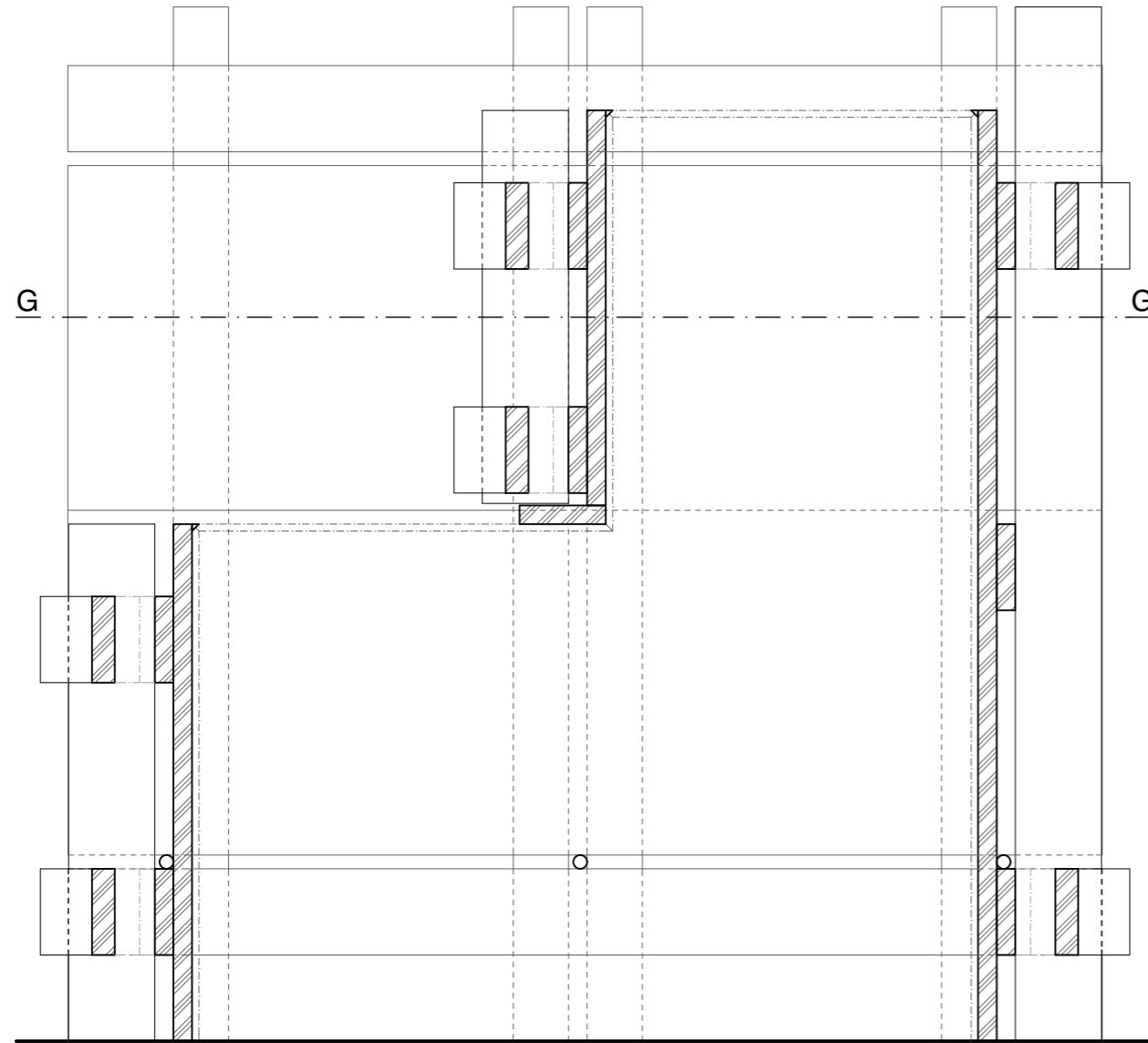


Position	Anzahl	Durchmesser	Länge		Masse		Bewehrung Wandscheibe
			Einzel	Total	Kg/m	Total	
1	6	10	1.32	7.92	0.617	4.887	
2	6	10	0.72	4.32	0.617	2.665	
3	4	10	2.74	10.96	0.617	6.762	
4	3	10	1.54	4.62	0.617	2.851	

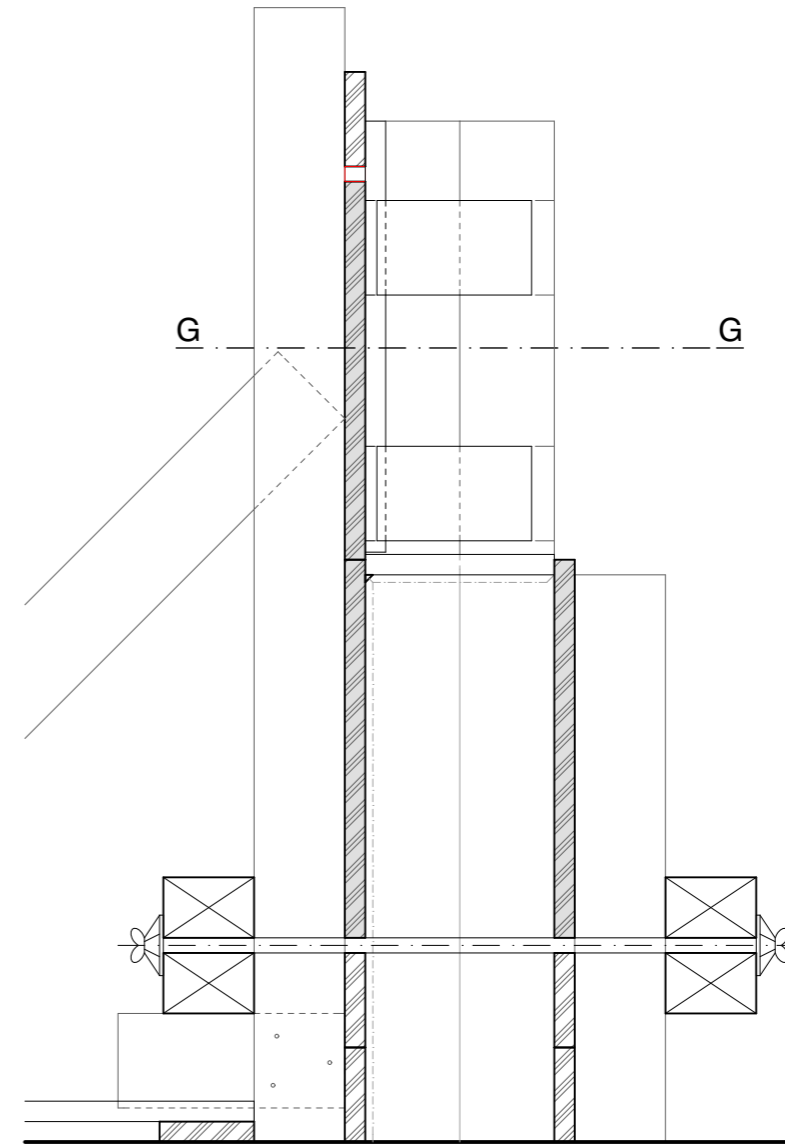
MLS MAURER  
BEWEHRUNG

QV17  
1:10

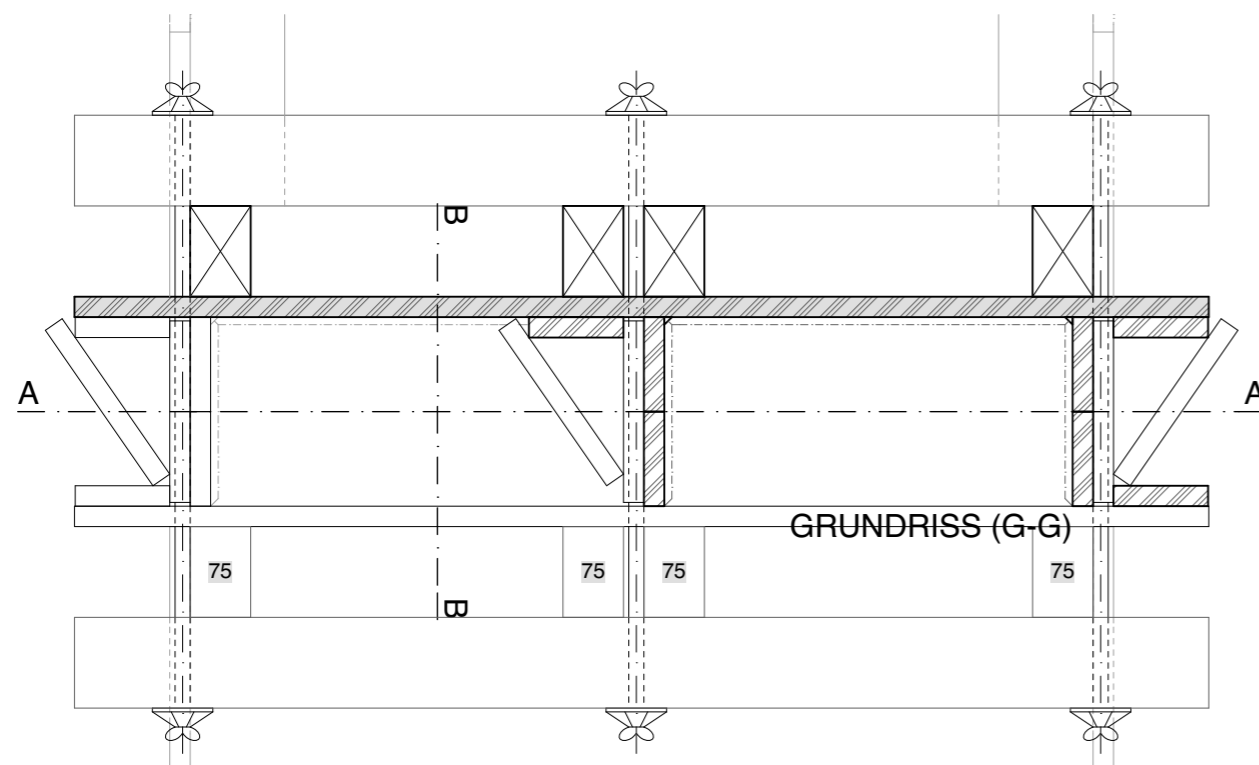
PN 1602 QV17-SO5 GR A3  
DA 30 11 2016 RV 08 02 2017  
GZ AMBERG ARCHITEKTEN, SURSEE BA



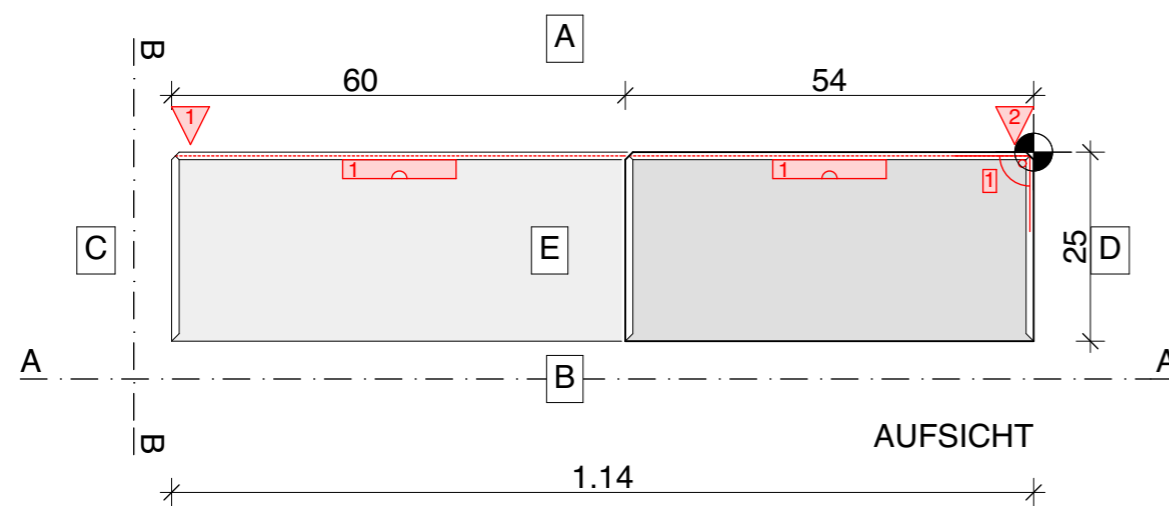
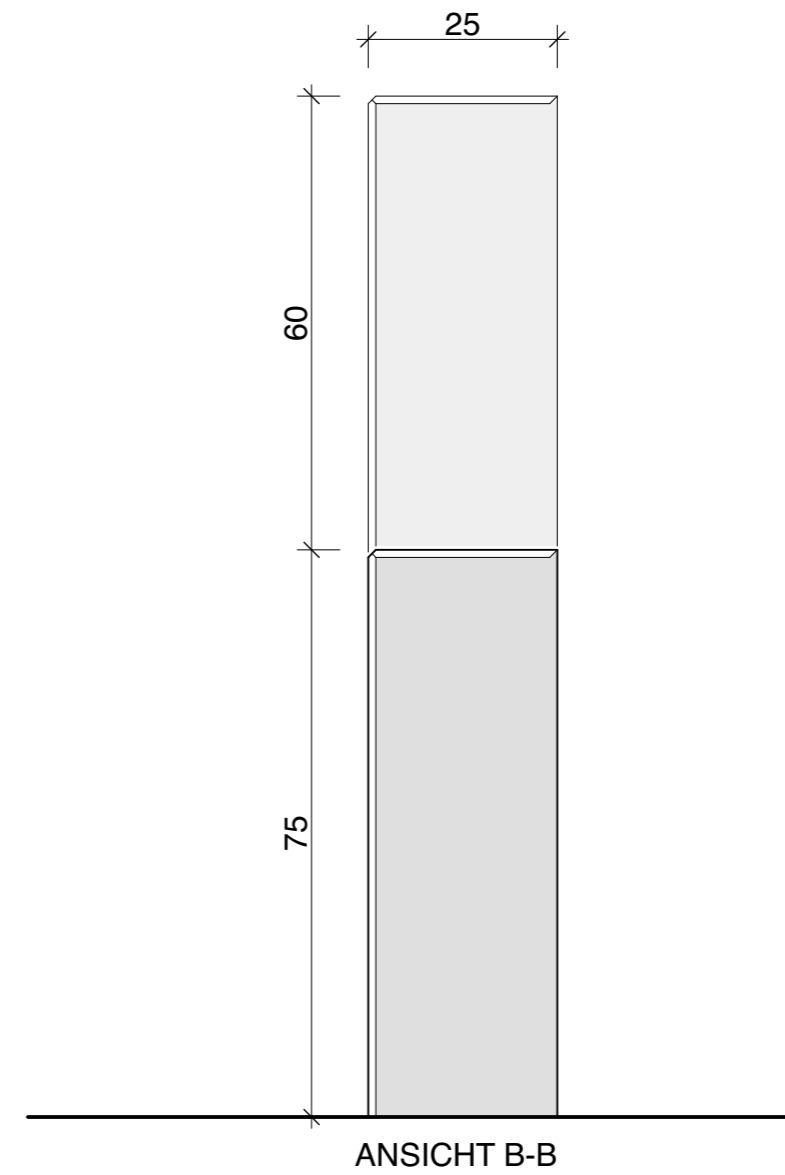
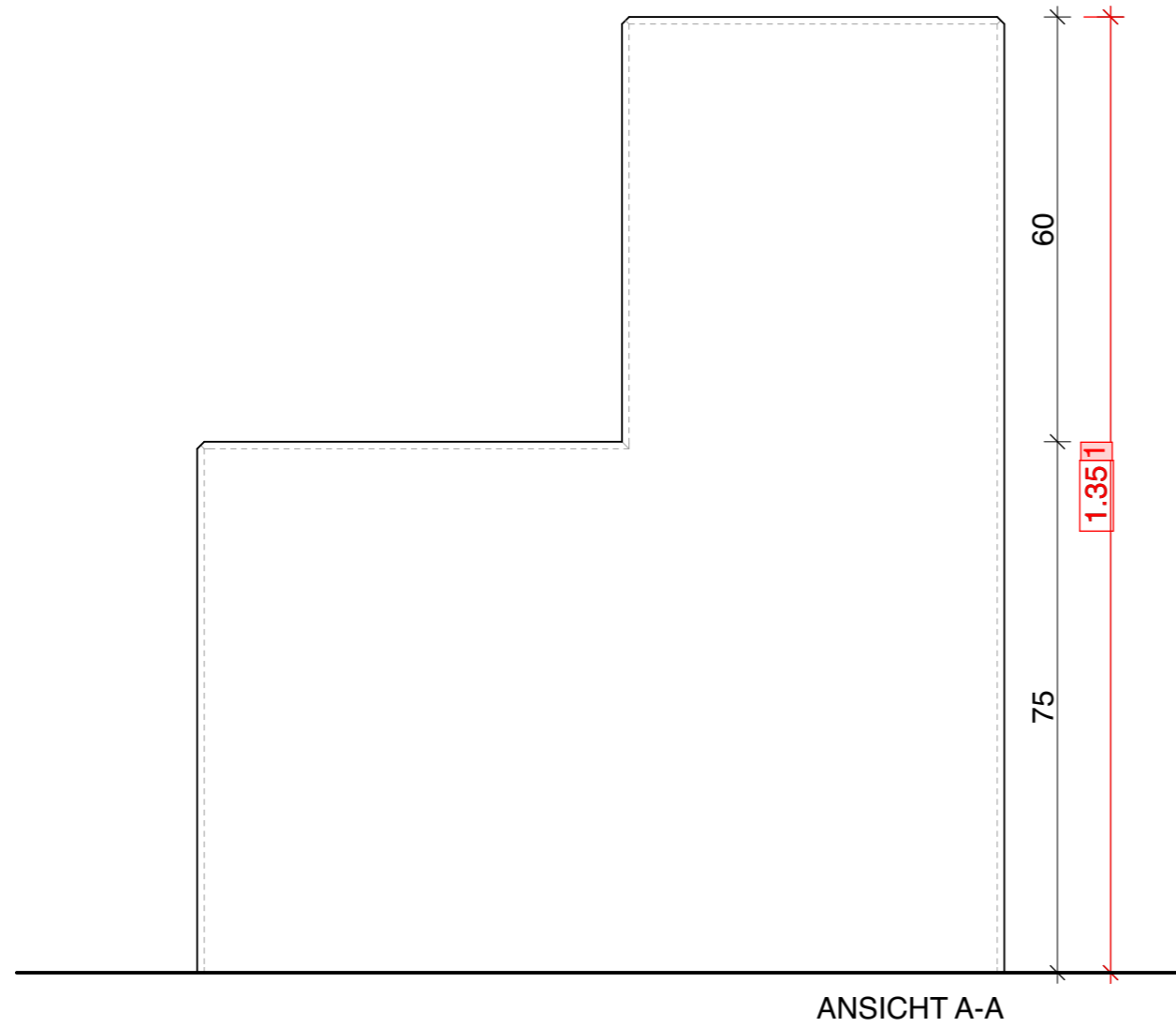
SCHNITT A-A







SCHNITT B-B



GRUNDRISS (G-G)



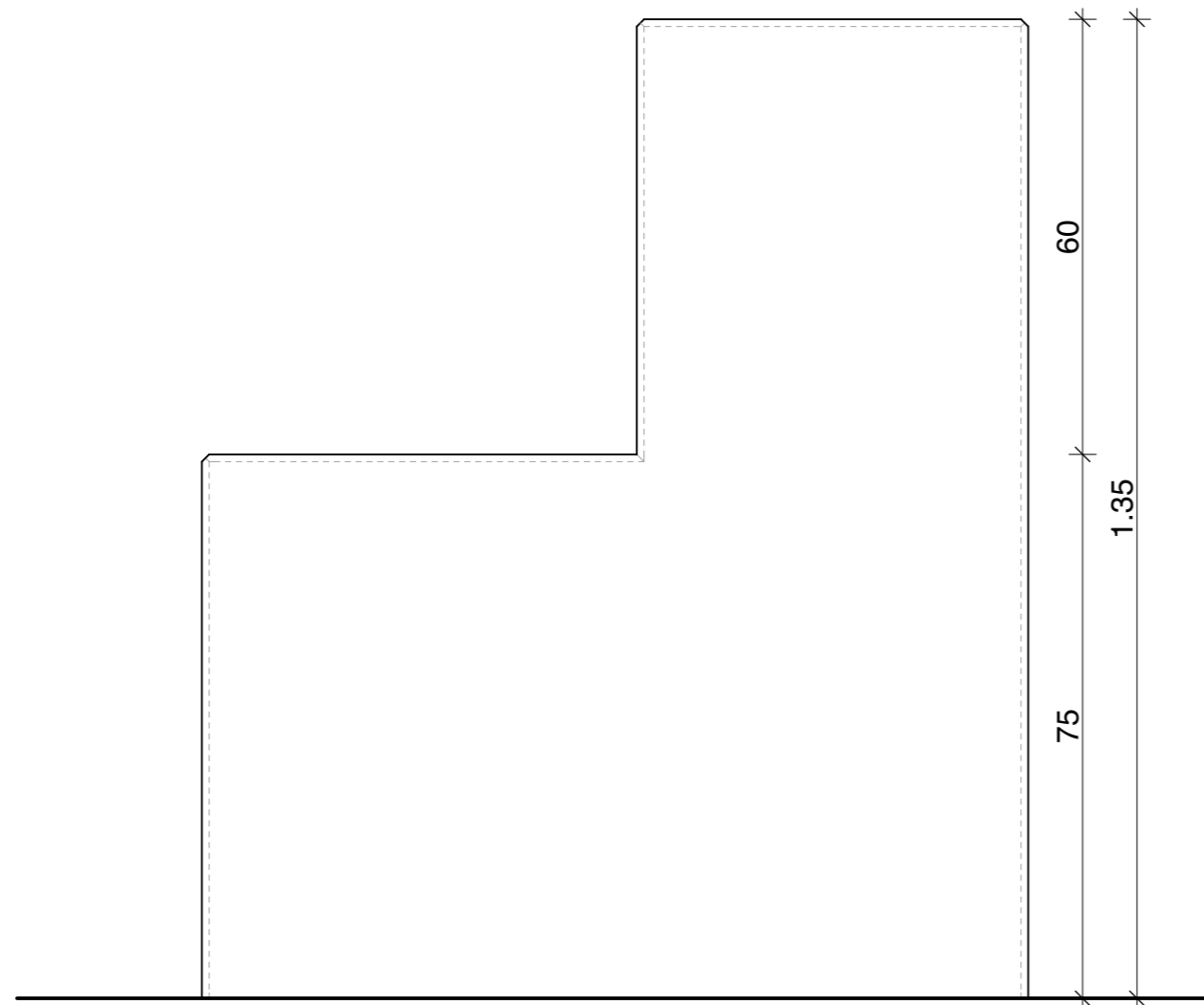
NORMAL

- MASSE  $+1.00^{50}$  1x
- SENKEL  2x
- WINKEL  1x
- BLEI  2x
- FLUCHT  0x

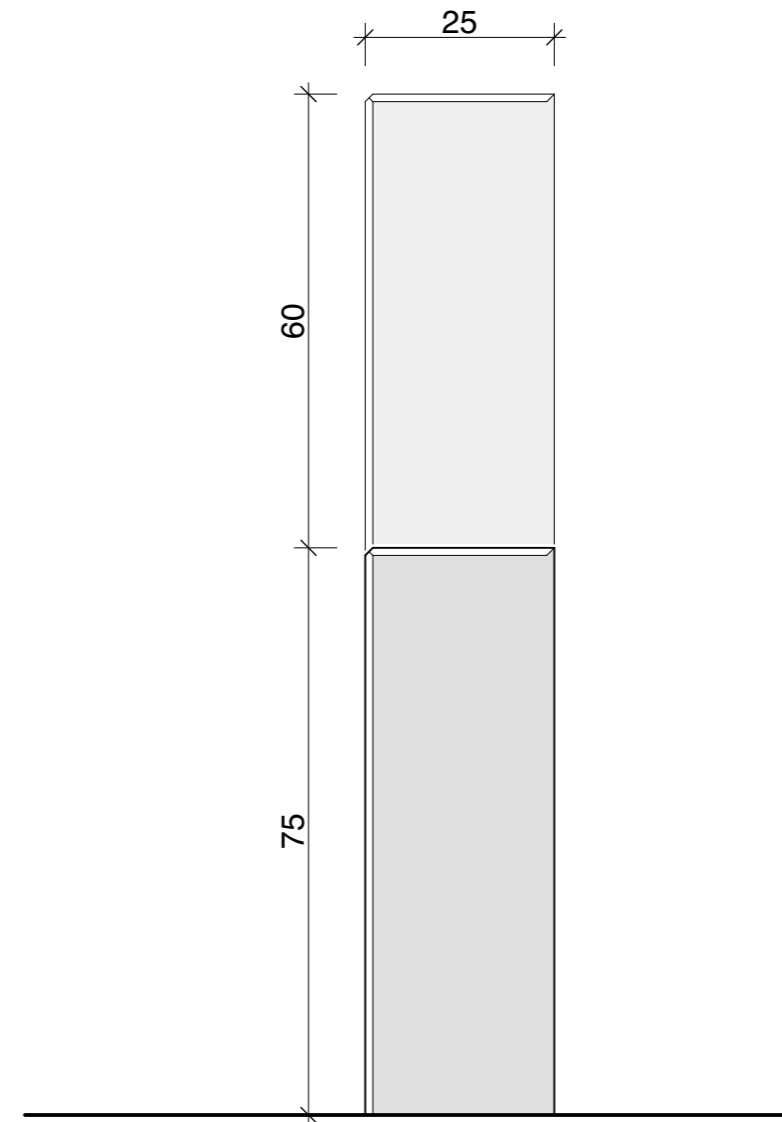
MLS MAURER  
 OBJEKT

QV17  
 1:10

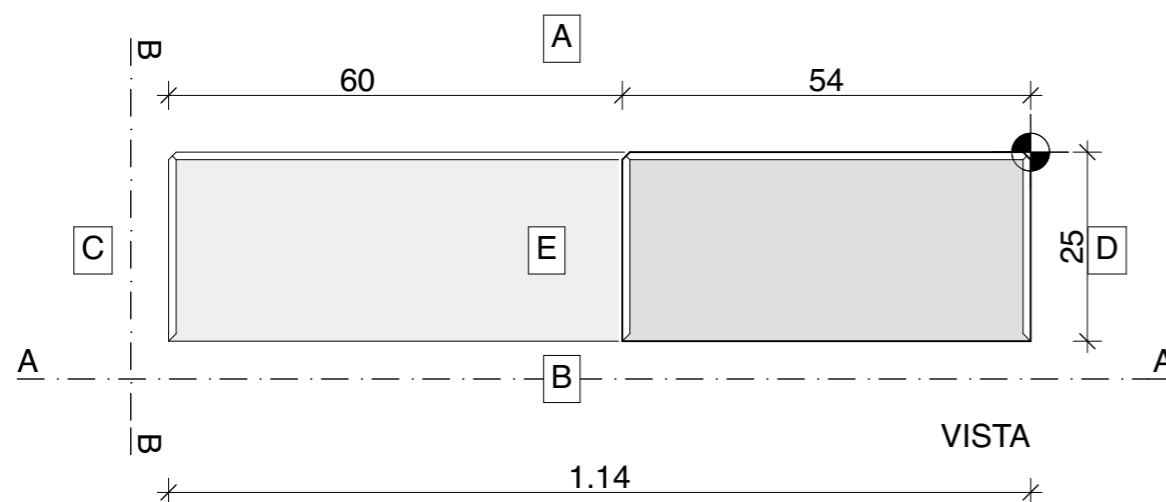
PN 1602 QV17-SO20 GR A3  
 DA 30 11 2016 RV 08 02 2017  
 GZ AMBERG ARCHITEKTEN, SURSEE BA



PROSPETTO A-A



PROSPETTO B-B

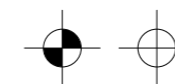


VISTA

COMPITO: in base alla vista, il prospetto A-A e la sezione B-B erigi la cassetta per la parete.

DESCRIZIONE: - tutto l'elemento è da cassetta con tavole piallate e pannelli d'armatura.  
- i pannelli d'armatura, i travetti e le tavole contrassegnate non possono essere tagliate.  
- sistema di legatura: Dywidag, la prima legatura è a quota +0.25 m dal pavimento.  
- tutte le sponde sono da eseguire con tavole piallate.

PROCEDIMENTO: - tracciare l'elemento a partire dal punto base.  
- erigere e mettere a piombo la parete A.  
- preparare e montare le 3 sponde C, D e E.  
- posare le liste triangolari secondo il piano.  
- posare e legare l'acciaio d'armatura secondo le indicazioni del piano.  
- cassetta la parete di chiusura B, lasciare aperto a partire da +0.77 m.

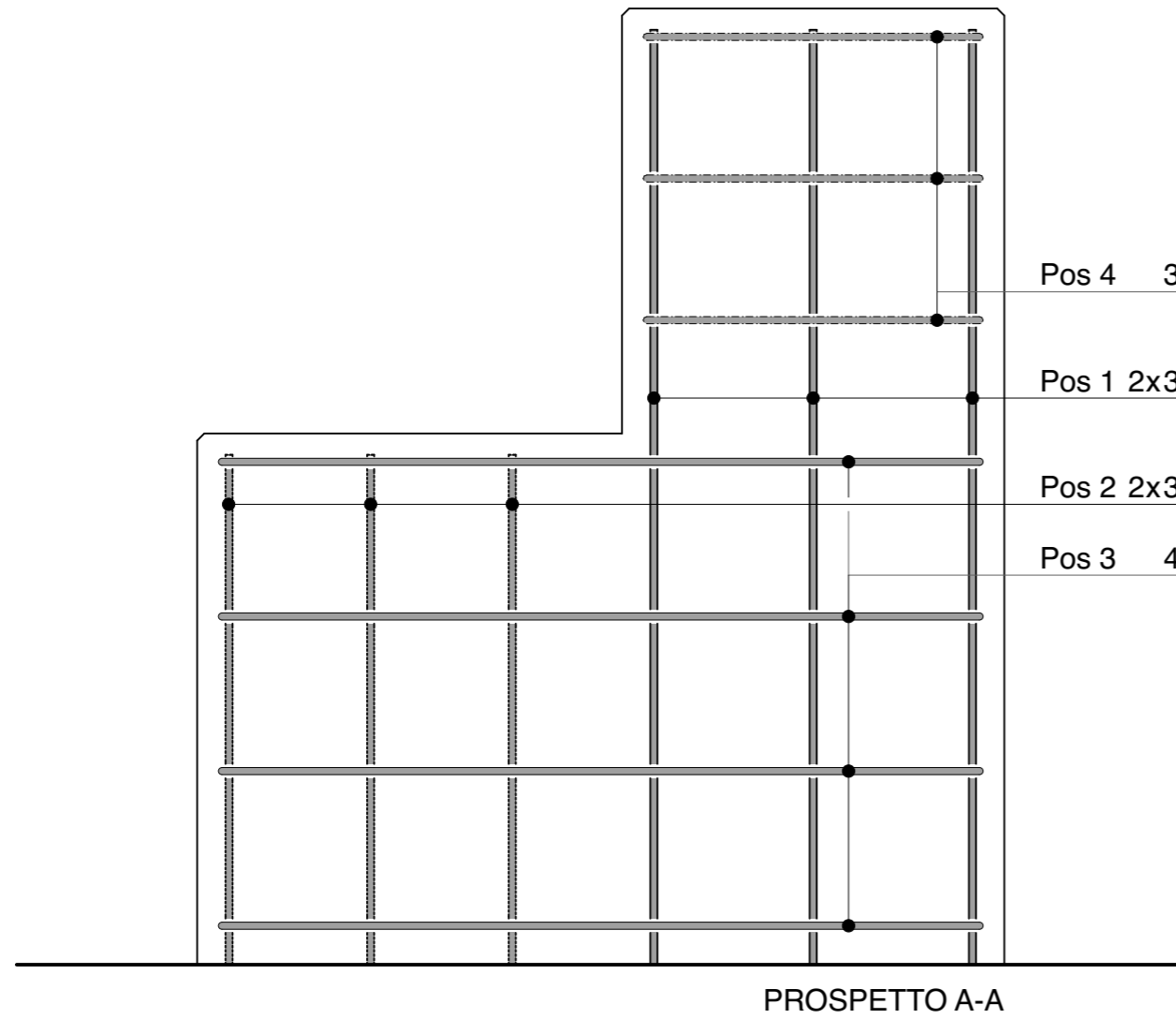


Punto base e controllo altezza  
(dal pavimento del laboratorio  $\pm 0.00$  m)

MLS MAURER  
OGGETTO

PQ17  
1:10

NP 1602 PQ17-SO10 DIM A3  
DA 30 11 2016 RV 08 02 2017  
DIS AMBERG ARCHITEKTEN, SURSEE BA

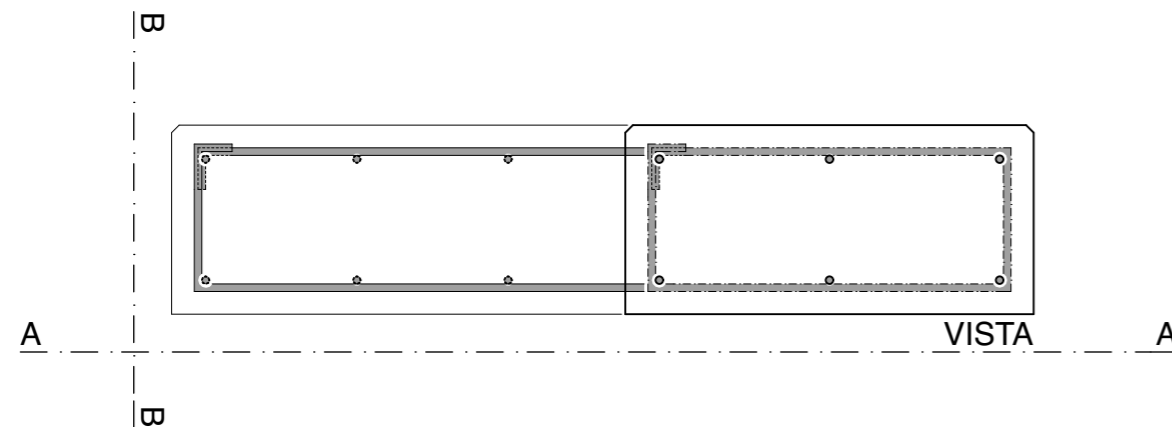
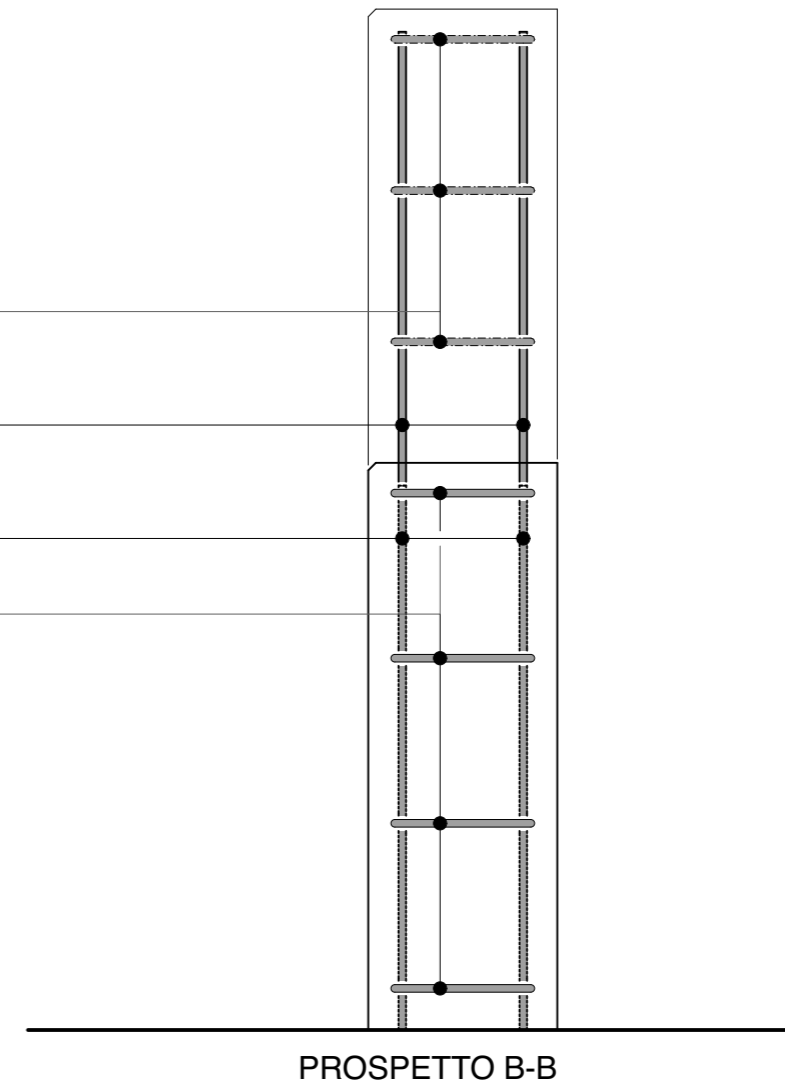


Pos 4 3 Ø10 ST A = 20.0

Pos 1 2x3 Ø10

Pos 2 2x3 Ø10

Pos 3 4 Ø10 ST

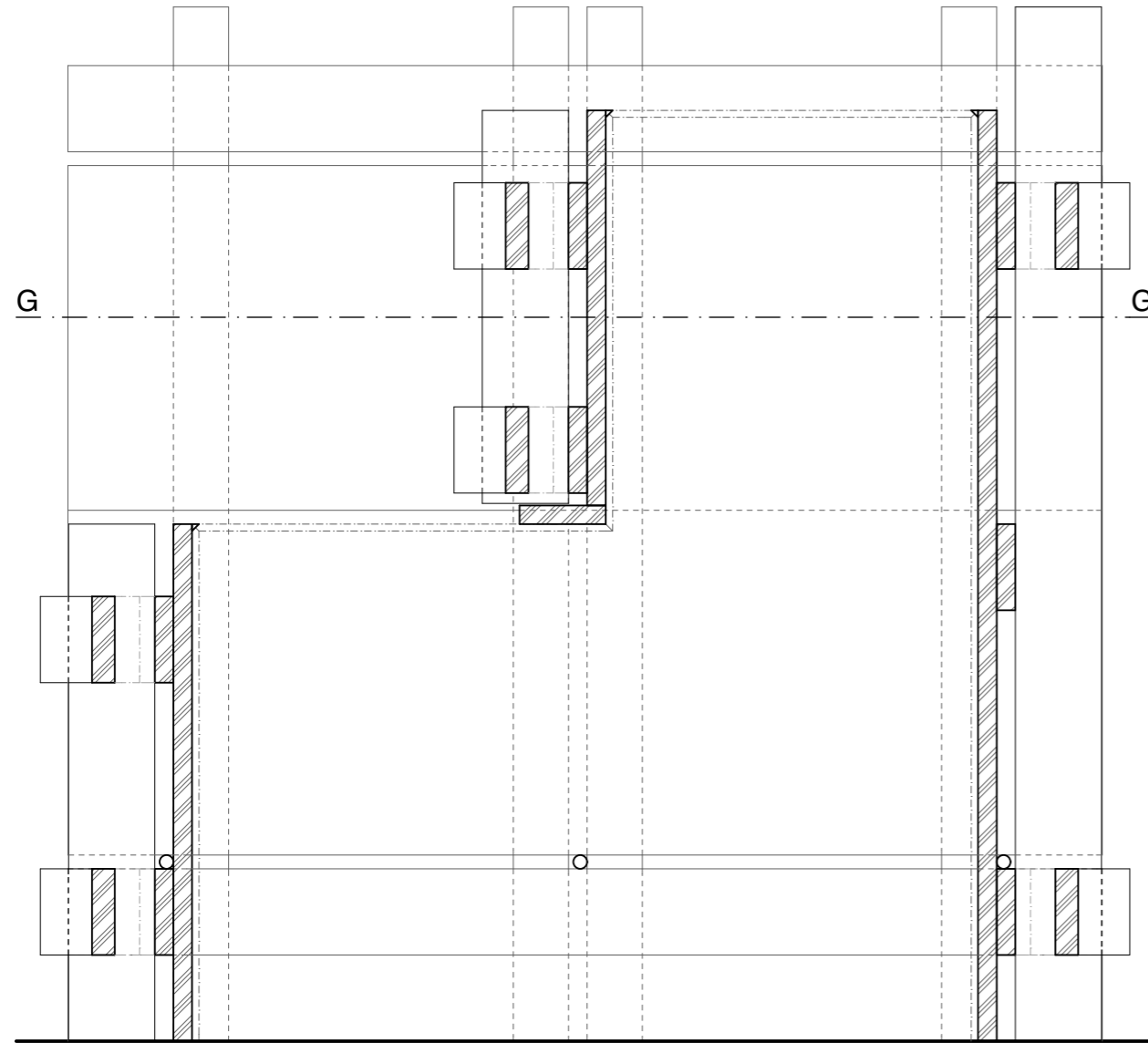


posi- zioni	pezzi	diam. Ø	lunghezza		massa		armatura forma e dimensioni
			parziale	totale	Kg/m	Totale	
1	6	10	1.32	7.92	0.617	4.887	
2	6	10	0.72	4.32	0.617	2.665	
3	4	10	2.74	10.96	0.617	6.762	
4	3	10	1.54	4.62	0.617	2.851	

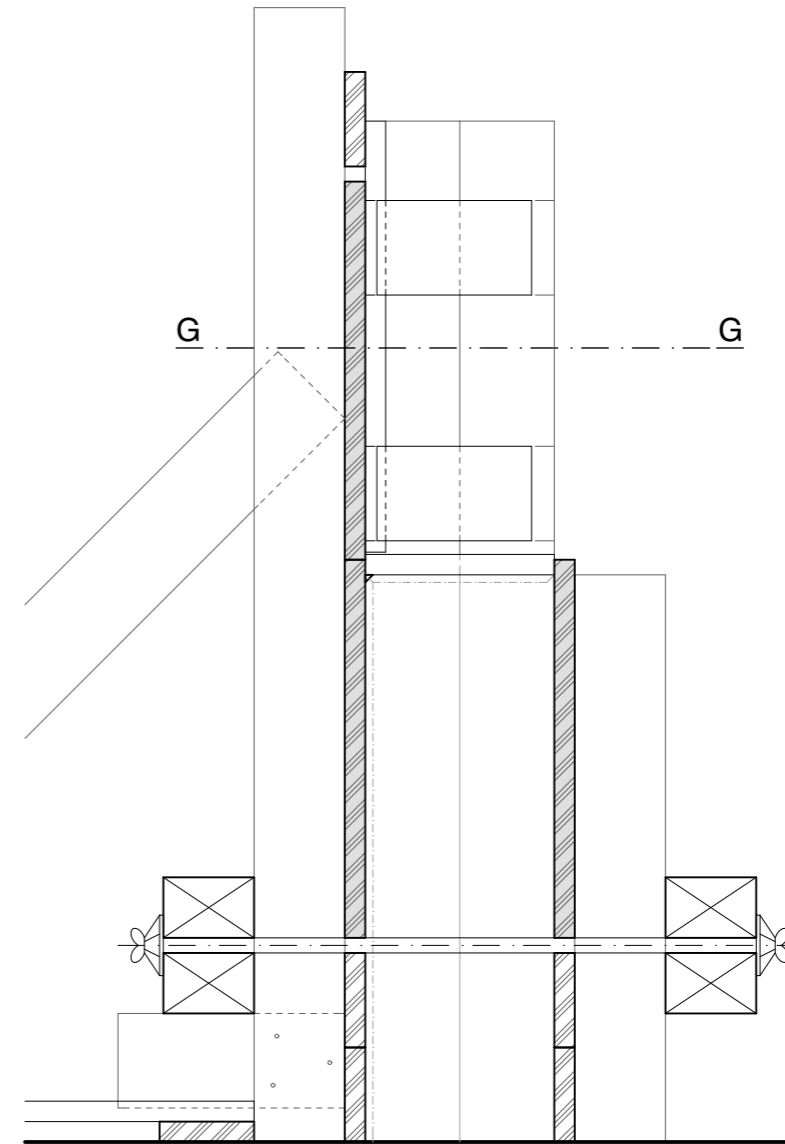
**MLS MAURER**  
**ARMATURA**

**PQ17**  
**1:10**

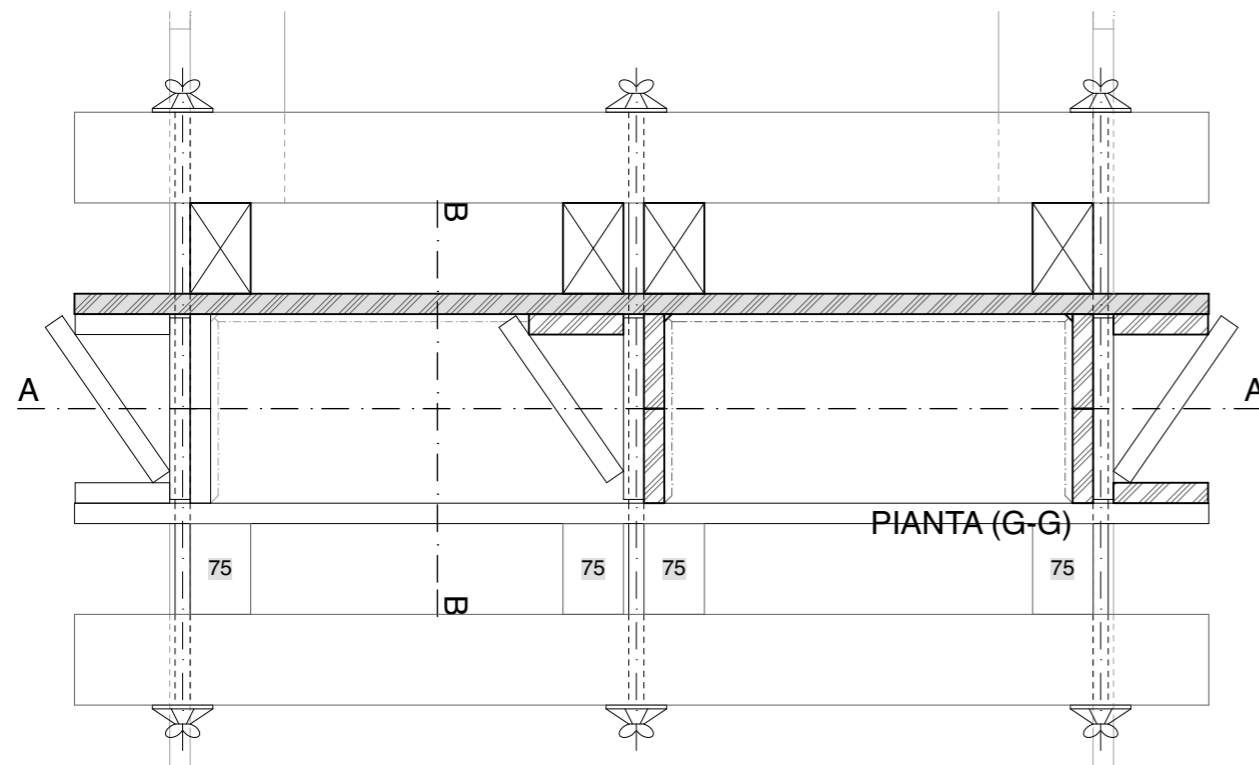
NP 1602 PQ17-SO11 DIM A3  
 DA 30 11 2016 RV 08 02 2017  
 DIS AMBERG ARCHITEKTEN, SURSEE BA



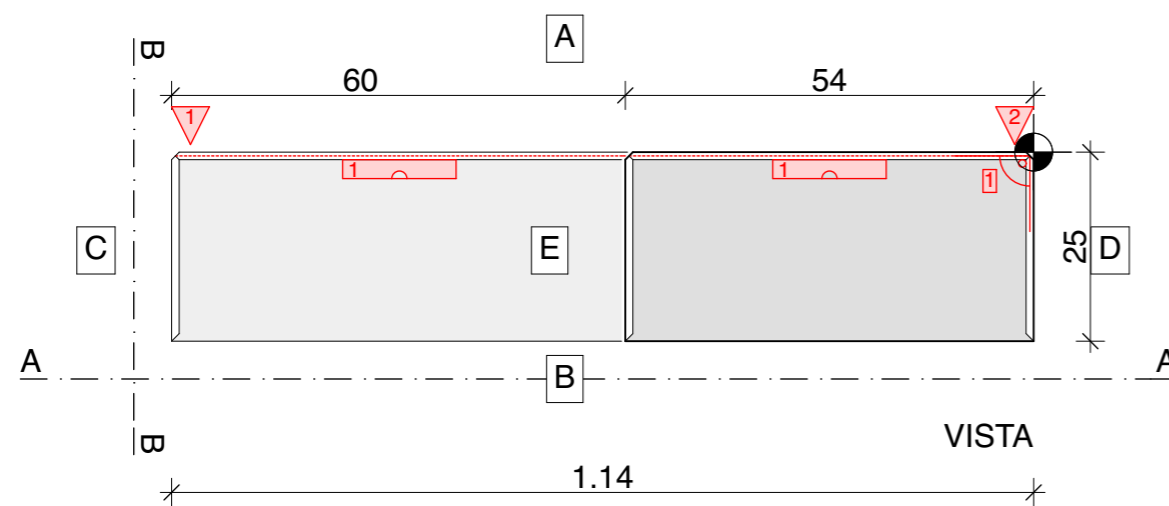
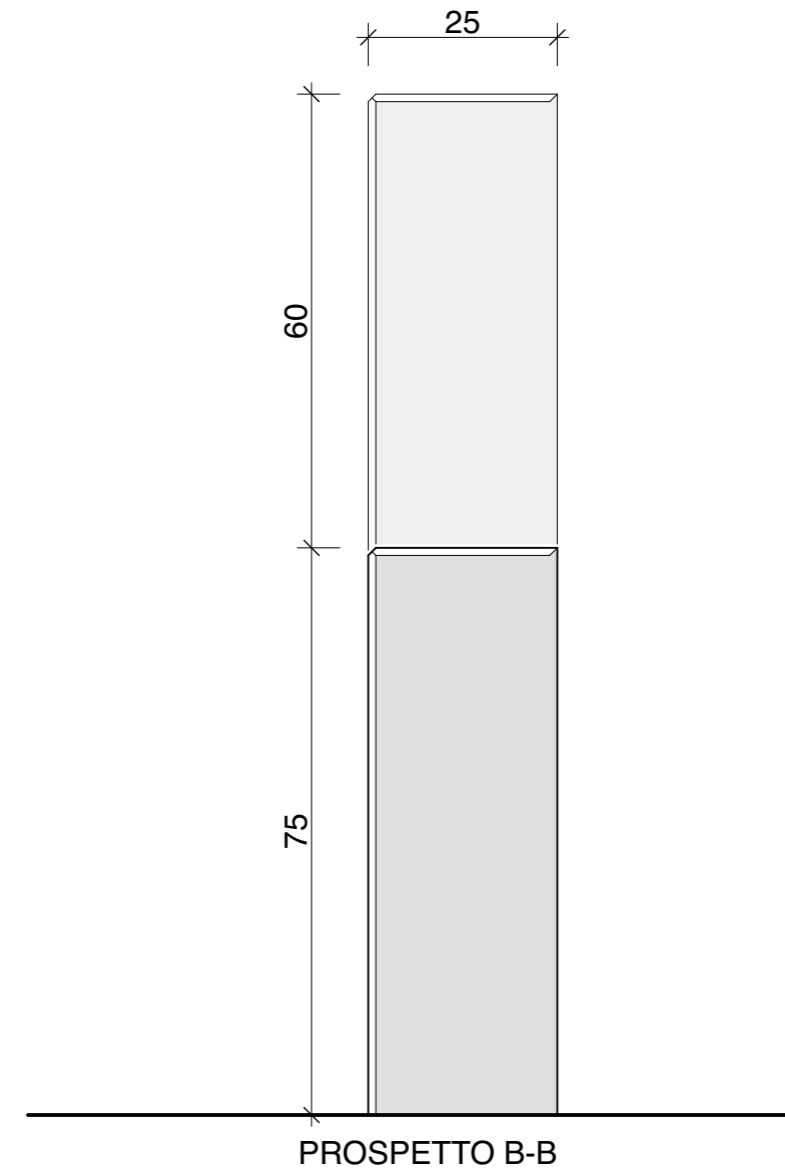
SEZIONE A-A



SEZIONE B-B



PIANTA (G-G)



NORMALE

- MISURE +1.00<sup>50</sup> 1x
- PIOMBO 2x
- SQUADRA 1x
- LIVELLO 2x
- ALLINEAMENTO 0x

MLS MAURER  
OGGETTO

PQ17  
1:10

NP 1602 PQ17-SO22 DIM A3  
DA 30 11 2016 RV 08 02 2017  
DIS AMBERG ARCHITEKTEN, SURSEE BA